

DEC

Robert Fruchthaus Retires From Mental Health Board

See Story and Picture on Page 5

Local Magician 'Teaches' Students Special Lesson

Read About It on Page 9

Winter Teams Prepare For Upcoming Seasons

See Stories in Sports Section

The Belleville Times

Vol. 76, No. 1

Second Class Postage Paid
At Newark, N.J. (USPS 049-220)

Thursday, December 6, 1984

Published
Every Thursday

35¢



Ribbon Cutting Ceremony — Mayor Michael Marottucci cuts the ribbon for the new Laterza's Pharmacy on the corner of Union Avenue and Jerusalem Street. With the mayor are (l-r) Edward Diomedé, Chamber of Commerce President Howard Halpern, John Diomedé, registered pharmacist and owner, and Bill Lynch, pharmacist. Not pictured is Al Crovatto, owner.

School Board Studies Extension Of Computer Use in the System

The School Board will study the possibility of extending the use of computers in the school system.

A presentation on the present use of computers was given last week by F. Thomas Buoni, the district's manager of computer information services.

Addressing the trustees at their Monday session in the board complex, Buoni delivered a synopsis of the past 18 months' accomplishments, including a description of the district's hardware and software as well as goals for future use.

"We've made great strides," said Buoni. He noted the computer system was moved from the senior high school to its present location in the board complex, rendering use more efficient.

Buoni noted all computer personnel were trained in a two-day introductory course as well as a special seminar to prepare them for the specific jobs they do on the system.

Board of Ed Accepts State Grants

The School Board agreed last week to accept \$30,416 in state vocational program grant monies.

The monies will be distributed among six programs as follows: Vocational Auto, \$10,000; Cooperative Home Economics, \$6,181; Cooperative Industrial Education, \$6,300; Introduction to Data Processing, \$4,935; Distributive Education, \$1,500; and Cooperative Office Education, \$1,500.

In other business, the board approved two supervisors and 11 teachers as personnel for the development of a language arts curriculum guide for grades K-6.

Personnel costs will total \$402,000 to be funded by 1984-85 block grant monies. The 13 appointees will contribute 30 hours each with pay rate set at \$12 per hour for the supervisors and \$10 per hour for teachers.

The supervisors are Leonard Marciano of Belleville High School and Paula Cummins of the Middle School.

The staff will include two high school teachers, six School 5 teachers and three School 7 teachers.

Work on the guide was slated to begin Dec. 4.

"All personnel have a user identification number as well as a password, which is changed regularly to maintain security," said Buoni.

Buoni noted the total cost for the system was \$100,000 which includes \$70,000 for the hardware and another \$30,000 for software.

"The hardware is the physical machine needed to operate," he explained, "and hardware for the school system is located in the complex as well as the high school and middle school."

"We began with only the financial system on the computers and expanded. Then we put on the student administrative system," he said, explaining that such details as student grades and schedules were maintained on the system for grades 7-1.

Buoni defined software as the program or set of instructions on how to process data. The first software purchased by the district was the financial accounting system.

He explained the new system offers potential for more efficient record keeping since it has room to store student medical records as well as the general records for special education classes.

"We did not have room in our old system for that," he said. He

also noted the old system operated much less efficiently.

"The old method took five or six days of continuous operation to obtain 1700 student schedules," he added, noting that the same quantity of work was completed in seven hours on the new equipment.

One trustee, Gabe Nazziola, though impressed by the increased efficiency, asked Buoni what was being done by personnel during all those hours saved.

Buoni said the hours saved from scheduling would now be spent on programming information that the old machine had no room for. "That's where the difference will be made up," he said.

Trustee Ernest Zoppi said he would like to see a cost comparison of the expenses involved if the district ran the material and if an outside company such as Automatic Data Processing (ADP) did the same job.

Board President Grace Purdue noted that much of Buoni's presentation was new to the board and would require further thought.

"I'm sure we'll soon be sitting down with Mr. Buoni to discuss the direction we'll take in the future," she said.

(Please see "Use" on page 19)

Choral Society Performs At Library This Tuesday

The Henrietta Benstead Choral Society of Kearny, will perform a concert at the Belleville Public Library, 221 Washington Ave., Tuesday, Dec. 11, 7:30-8:30 p.m.

Varsity Club Dinner Today

The Belleville Varsity Club's annual fall sports dinner will take place Thursday, Dec. 6, starting 6:30 p.m. at the Wayne Manor, Route 23 in Wayne.

The varsity members of the fall sports program will be honored at this affair and each senior participant who earned a varsity letter will receive a Varsity Club award.

Tickets are \$18 and may be obtained by calling Marie Kimball at 759-3912.

Nelly Pickler, choral director for the Society, described the December program as a mixture of popular, folk, and serious music from around the world. After a brief intermission, seasonal music will be performed.

The Henrietta Benstead Choral Society was organized in 1983, giving seniors the opportunity to put their musical skills and interests into a chorus which has performed at schools, libraries, and colleges around New Jersey. The concert at the library is sponsored by the Friends of the Belleville Public Library, who will also provide refreshments during the brief intermission.

Admission is free, but seating is limited.

For more information, call 759-9200.

Money Available to Storeowners

Development Block Grant Funding Totals \$2 Million

By Linda Telesco

Citizens expressed themselves loud and clear at last week's public hearing on the Essex County Community Development Block Grant allocations for this year.

Nancy Cimino represented the county at the hearing which is held annually to permit citizens a chance to suggest how they feel the federal monies, filtered through the county system, can best be used.

According to a report read by Cimino at the hearing held during the Nov. 27 Commission meeting, Belleville joined the grant program in 1978 and has received a total of \$2,338,742 in funding since that date.

The block grants are awarded on the basis of project priority. The community submits what it considers to be needy projects and the county later decides which are most urgent.

Block grant monies are awarded only for use in designated neighborhoods.

Past projects selected by the county included renovations to the Friendly House in Silver Lake, improvements in the St. Peter's area, street and sewers, and the commercial revitalization of Washington Avenue, among others.

John Charles of Cortlandt Street asked if the 1984 funds could be obtained for repairs on private homes.

According to Cimino, a resident can apply for a county home improvement loan. "Some of those may be outright grants to qualifying individuals," she said.

Cimino told one questioner there funds could not be used to construct senior citizens' housing facilities, a question that comes up each year with the same reply at these hearings.

The most vigorous questioner was Vincent Frantantoni, a former business owner on Washington Avenue.

Frantantoni noted that the county lists of grants indicate that \$25,000 was allotted in 1982, 1983 and 1984 for the purpose of "facade improvements," to businesses on the Avenue.

"Where did this money go?" asked the citizen. "Did anyone apply for it and receive it?"

Frantantoni said many storeowners he talked to did not know of the grant.

Cimino said the grants and projects are advertised regularly,

but she noted she "did not recall" anyone in Belleville applying.

Frantantoni is a vigorous proponent of revitalizing depressed business areas in town by encouraging current owners to care for their property rather than by attempting to replace present activity with new stores or offices.

"We see this facade improvement being done in other towns. Why not here," he said.

Cimino told the citizen that although the county grants were available, red tape and technicalities often prevented the merchants from taking advantage of them.

She explained the requirements of the Davis-Bacon Act, which stipulates that for federally-funded programs, any construction project over \$2,000 requires that a private contractor pay workers the federal or state minimum wage level which even is higher.

"Storeowners will be spending more than most small businesses can afford to because of the requirement," she said, adding, "It's unfortunate, but the money is there not being used."

Frantantoni asked for a

meeting with county officials, noting he has conferred with them repeatedly to discuss how much

(Please see "Township" on page 19)

Santa Claus Is Coming Here Dec. 8

Santa Claus will arrive at Town Hall Saturday, Dec. 8, at 11:45 a.m. by way of the "Choo Choo" Express.

The event, sponsored by the Belleville Chamber of Commerce, in cooperation with the Veterans Council and the Board of Education, will also feature the Belleville High School Choral Group, led by Director Tom Finetti. The group will tour the township with Santa making sing-along stops along the way.

Picture taking with Santa Claus will take place at the Chamber office, 155 A Washington Ave.

For more information, call the Chamber office, 759-4848.

AARP Chapter Meeting Features Choral Group

The Belleville Chapter 2051 American Association of Retired Persons will meet Thursday, Dec. 6, 1 p.m. at the Fawcith Presbyterian Church, 444 Union Ave.

There will be a short business meeting followed by a discussion on trips planned for next year.

The meeting will feature the Belleville High School Choral

Group, led by Thomas Finetti, in a Christmas program.

Hostesses for the evening will be Kay Brody and Dorothy Barby.

The chapter Christmas party will be held Wednesday, Dec. 12, at the Friar Tuck Inn, Route 23 in Cedar Grove.

The next official board meeting will be Friday, Dec. 14.

"Photo with Santa" Begins This Saturday

The seventh annual "Photo with Santa," sponsored by the Belleville Policeman's Benevolent Association, Local 28 will be held Saturday, Dec. 8 through Monday, Dec. 24 at the Grand Union Mall (next to Radio Shack).

The program will run 12-6 p.m. Monday through Friday and 10 a.m.-7 p.m. Saturdays. The program will also run Sunday, Dec. 23, 12-7 p.m.

Cost is \$4 per photo. All proceeds will go to charity.



Musical Concert — The Henrietta Benstead Choral Society of Kearny will perform a concert Tuesday night at the Belleville Public Library, 221 Washington Ave. The group performs a mixture of popular and folk music.

1st DeWitt President Attends Convention

Henrik Tvedt, president and chief executive officer of First DeWitt Savings and Loan Association, has just recently returned from the 92nd U.S. League of Savings Institutions Convention in Washington, D.C. As anticipated the meeting was a busy one, given the task of considering the new challenges facing American savings and loans since deregulation.

The convention was opened by U.S. League President Paul Prior, who commented that while competition between associations and rising interest rates have tested the abilities of management, many issues have been faced and conquered and in general the industry has forged ahead.

The keynote speaker of the gathering was the Honorable Donald T. Regan, Secretary of the Treasury, who spoke on the currently bright economic environment, and the available routes for maintaining prosperity.

Regan was followed by the Honorable Edwin J. Gray, Chairman of the Federal Home Loan Bank Board. Gray's subject concerned the areas of investment



Henrik Tvedt

available to savings and loans, and the importance of concentrating on the avenues that are traditionally successful. In relating Gray's speech, Tvedt points out that "First DeWitt management concurs with Edwin Gray's viewpoint. Historically, we have concentrated on the solid investments that involve the local community.

Belleville Business Bureau

By Howard Halpern

Santa Claus is coming to town. Since Santa has such an enormous task ahead of him on Christmas Eve, he decided to rest his reindeer and come to Belleville by way of "choo choo" Saturday morning, Dec. 8.

In cooperation with the Veterans Council and the Board of Education, this event, sponsored by the Chamber of Commerce, will start on the steps of Town Hall at 11:45 a.m. Accompanying Santa will be Mayor Marotti, Commissioners Joseph Grande and Ralph Di Ruggiero and the Belleville High School Choral Group led by Director Tom Finetti. The chorus will then hop aboard the Santa "Choo Choo" Express and tour our fair township making sing-along stops along the way.

Picture taking with Santa Claus will take place at the Belleville Chamber of Commerce office, 155A Washington Ave. I'm often asked, "Well, how do you like your job so far?" Being the president of the Belleville Chamber of Commerce is certainly quite a challenge, and I love every minute of it. The reasons are too numerous to expound in the space of a newspaper column.

One example was the community spirit and the great time that was experienced at the Chamber's 20th annual dinner-dance Nov. 24; the dignitaries, award recipients Grace Purdue and Sheriff Tom D'Alessio, the festivities, the dinner, the music, the six senior citizens that won free invitations to the dinner and most of all the 225 happy faces that attended.

My position is also a fulfilling one. We are often called upon to help fellow business people in community matters pertaining to their respective businesses. I and my Board of Directors are all volunteers, with no monetary rewards or political alignment. Membership dues are our only source of revenue and used strictly for operating expenses. The goal of the Belleville Chamber of Commerce is for a better Belleville, not only for private business, but for each resident as well. To achieve these goals we need your support and participation. Join the Belleville Chamber of Commerce. We are your tool — use us.

There are 65 Chicken Holiday stores in South Jersey an only two in North Jersey. One of the two has just opened its doors at 368 Main St. in the Grand Union Mall.

The Belleville Chamber of Commerce is proud to welcome its newest member to town. Owners Joe and Silvana Quarter are quite excited about their new venture and are experiencing instant success.

Chicken, ribs and seafood are the daily fare at Chicken Holiday. Chicken Holiday features Purdue chickens which are cut and sectioned on the premises. The ribs are from Hatfield. One can also feast on scallops, shrimp, flounder, and fish and chips with side dishes of french-fried mushrooms, zucchini, cauliflower, and mashed potatoes.

Chicken Holiday caters to any size party. "If you need 500 pieces of chicken for a party, just call about an hour ahead." Chicken Holiday, open seven days, offers free delivery from 5-9 p.m. Ribbon cutting ceremonies for the official grand opening will be on or about Dec. 15.

High School Chorus To Perform Dec. 19

The annual Belleville High School Chorus and Orchestra concert will be conducted Wednesday, Dec. 19, 8 p.m. in the high school auditorium.

Works featured by the orchestra will include "A Noyse of Minstrels" by Gordon Jacobs, "Sleigh Ride," and other works for the holidays. The chamber orchestra will present traditional Christmas music which will include "Silent Night," "Hark! The Herald Angles Sing," and "Frosty the Snowman." The members include Elizabeth Akian, Ann Aquino, Donnalée Daudelin, Frank Piserchia, Gina Jyams, John Sandora, and Marina Piserchia. The chamber orchestra and full orchestra are directed by Edwin Black.

The chorus, directed by Thomas Finetti, will present "Silver Bells," "Chestnuts Roasting on an Open Fire," "Fum-Fum-Fum," Gospel rock version of "Go Tell it on the Mountain," "This Little Babe," from Ceremony of Carols, and others. Featured soloist will be Donna Patimio singing a medley of standard Christmas songs. The chorus will also present a chorus from the "Messiah" with soloist Cynthia Santiglia singing the aria, "O Thou That Tellest Good Tidings to Zion."

Another DeCarlo Listing!



Outstanding Nutley Colonial

Features include central air, large rooms, 1½ baths, fully aluminum sided, every window is thermopane, 3 bedrooms, built in garage. Asking \$127,900. Listed by David J. DeCarlo.

Ann DeCarlo

AGENCY/REALTOR
880 BROAD ST., BROOKDALE, BLOOMFIELD
748-5288



Neighborhood Watch Group Meets Monthly

A Neighborhood Watch meeting was held at the Recreation House Wednesday, November 28. All Neighborhood Watch Program members were informed of the recent apprehension of the night-time burglar who had been terrorizing numerous areas in the township. There was also a discussion on self-protection methods against any possible attack, such as a purse snatch, mugging, armed robbery and rape.

There will be meetings once a month and any person wishing to join the Neighborhood Watch Program can contact Detective Fred Pulco, Crime Prevention Office at police headquarters, 759-8221.

Pharmacy Footnotes



Vincent Cozzarelli
Reg. Ph.

FLAMMABLE COSMETICS
Women should exercise some care when applying cosmetics. This includes reading the labels on cosmetics. Products containing hydrocarbons (the propellant in aerosols), high levels of alcohol (in some hair mousses and hairsprays, for example), and/or solvents (in nail polish and removers) are flammable. It is very unwise to smoke or light a match around these products or to expose them to an open flame. Once applied to hair or nails, the hydrocarbons, alcohol and solvents evaporate as does the fire hazard. Until then, treat such cosmetics with extreme care, even if polishing nails seems like a leisure-time activity.

Great care is exercised in filling your prescription at ROSSMORE PHARMACY, 338 Washington Ave., 759-1956, 759-1968. We are Medicare and Blue Cross approved. Walkers, wheel chairs, crutches, canes and other convalescent aids are rented or sold. Greeting cards, gifts, cosmetics and toiletries are available for Christmas gifts. Hours: Daily 9am-10pm, Sundays 9am-9pm.

HANDY HINT:
People with high blood pressure should read the labels on antacid remedies before use.



First in Lending Services
First in Savings Plans
First in Friendliness
First in Convenience

FIRST
DeWITT SAVINGS
AND LOAN ASSOCIATION

6 OFFICES IN YOUR OWN BACKYARD!

BELLEVILLE • BLOOMFIELD & CEDAR GROVE

TELEPHONE **751-2800** ALL OFFICES



Lee
The brand that fits™

Striped Lee Riders
Stand out from the blue jeans crowd in Striped Lee Riders, made of 100% cotton. You'll be first in fit and fashion with Striped Denim from Lee!

Navy Blue Straight Leg Striped Jeans
Reg. \$28.00
Christmas Special \$19.90

Plaza men's store
363 Franklin Ave. Belleville 759-0019
Holiday Hours: Mon-Fri 9:30-9 - Sat 9:30-6 - Sun 11-4
Free Parking Free Gift Boxes
Visa, Master Charge & American Express Accepted

Thur. Fri. Sat. Sun. Mon. Specials
December 6 thru December 10

1/2 lb. **HOT JEWISH CORNED BEEF** \$2.33
(1 Fresh Barrel Pickle 38¢ w/ Corned Beef Special only)

1/2 lb. **BREAST OF TURKEY** \$1.78

1/2 lb. **HORMEL HARD SALAMI** \$1.83

1/2 lb. **THUMANN'S GERMAN BOLOGNA** .. \$1.28

Have Lunch With Us...
Free Coffee With Lunch 11:30a.m.-2:30p.m.
Open 7 days a week till 10:00 P.M.

Towne 751-3935
DELICATESSEN & CATERERS
650 JORALEMON ST.
Cor. Franklin Ave., Belleville
Member of Belleville Chamber of Commerce

Kikkert, Crosson, Harris and Wilkens Promoted at Provident Savings Bank

Four career bankers of Provident Savings Bank have been promoted, says Kenneth Albers, chairman of the board and chief executive officer at Provident.

Richard Kikkert was named assistant treasurer/security officer. Thomas Crosson, Joan Harris and Elfride Wilkens were named assistant secretaries.

Kikkert, of Carlstadt, joined Provident in 1984, after his retirement as chief of detectives of Bergen County. He has bachelor of arts and master of arts degrees from Rutgers University. He also was graduated from Rutgers law school with a doctor's of jurisprudence.

Crosson, of Ridgely Park, joined Provident as a member of the management potential group in 1983. Crosson was graduated from St. Peter's College and has a bachelor of science degree. He is

assigned to Provident's Teaneck office.

Harris, of Dumont, joined Provident in 1979 as a teller-trainee. She served as a customer service representative and supervisor

in charge of the Northvale office. Harris was graduated from Dumont High School and attended American Institute of Banking.

Wilkens, of East Windsor, joined Provident in 1978 as a teller-trainee and was recipient of Provident's Bank Teller of the Quarter Award. Wilkens has served as a customer service representative and assistant to the manager of East Windsor office. She attended American Institute of Banking.



Richard Kikkert



Thomas Crosson



Joan Harris



Elfride Wilkens

the best of both worlds

holiday shopping weekdays 10-9 sat 10-5:30 • sun 11-4

JNC
the men's store
467-9200

parking rear of both stores
FREE gift wrap
FREE shipping anywhere in USA

467-9200
Janette Nutley Center
nutley center • nutley

HAPPY HOLIDAYS
LUNCH IS QUICK & DELICIOUS
AT
PROUD MARY'S
SUPER LUNCHEON SPECIALS
Monday thru Friday from 11:30 a.m.-4 p.m.

MON.	TUES.	WED.
3 Egg Omelets Cheese & Western \$4.25	Veal Rollatine \$5.95	Soup & Sandwich Ham & Swiss Soup of the Day \$4.50
THURS.	FRI.	
Corned Beef Hash & Fried Egg \$4.50	Lemon Sole (w/lemon butter) \$4.95	

Along With Our Fine Menu Items

409 Franklin St.
Bloomfield
429-9246

PROUD MARY'S
Restaurant and Lounge

Deduction Tips from H&R Block

Even with the joys of the holiday season upon us, there are still reminders of the poor, the homeless, and victims of famine, natural disasters and war. According to Bert Tobia, district manager for H&R Block, even if you do not itemize deductions on your tax return, you can deduct 25 percent of what you donate to charity, up to a maximum of \$300. If you do itemize, in most cases you can deduct up to 50 percent of your income.

Donations made up to Dec. 31 can work to your advantage on your 1984 tax return.

Keep a few cautions in mind, however. Give your contributions to an organized charity, not directly to an individual. Always obtain a receipt and give a check, not cash. Remember, contributions need not be just money. If you give used toys to a children's home, list the items in a letter along with an estimate of their present value and ask the charity to receipt it for you. Follow the same procedure with used clothing.

Robert Tanis Attends Bank Conference

Robert B. Tanis from Peoples Bank, Belleville, recently attended the New Jersey Bankers Association 1984 Consumer Credit Conference in Atlantic City.

Bank consumer loan officers received an update on student loan programs, the operational and legal aspects of leasing business equipment and cars as well as tips on how to market their bank's products.

SEE US FOR HOLIDAY SHOPPING

WE DISCOUNT
LEE & LEVI'S
Jackets - Jeans - Plaid Shirts
Lee Stretch Jeans to Size 50
Levis For Men to Size 54

FULL ASSORTMENT OF
Outerwear - Work Clothes - Thermals
Work Shoes

WE SPECIALIZE IN LARGE MEN'S SIZES

SPECIAL HOLIDAY HOURS
Starting Wednesday, Dec. 12th
Mon.-Fri. 9 a.m.-7:30 p.m. Sat. 9:00 a.m.-5:30 p.m.

ATLANTIC UNIFORM
444 Washington Ave. Belleville
751-1242
We Accept Visa & MasterCard

BILL TONE'S

Hot & Cold Catering
For Large Or Small Parties
All Cooking On Premises
Featuring Our Old World Italian Recipes

INDIVIDUAL DINNERS AVAILABLE
667-4877
95 Harrison St., Nutley

WE DELIVER
Open 7 Days
7 a.m.-8 p.m.

SANTA'S MARKDOWNS
START AT BIGELOW MOTORS!

He's made up his list and checked it out twice, to find that BIGELOW MOTORS, has the price that's real nice!
BEAT THE YEAR END RUSH! SHOP EARLY AND SAVE!

Brand New 1985 CHRYSLER FIFTH AVENUE
\$14,350
Price excludes tax and license

4 door sedan, 318 cu. inch V-8 engine, automatic transmission, power steering, power brakes, power windows, power seat left, power door locks, cruise control, deluxe wipers, AM/FM stereo cassette, wire wheel covers, full spare tire. Stock No. BCB908 Freight and dealer prep included. List price \$15,981.

Brand New 1985 PLYMOUTH CARAVELLE
\$9,745
Price excludes tax and license

2.2 4 cyl. eng., auto trans., per. steer., power brakes, air cond., front wheel drive, radio, steel belted w.w. tires, tin glass, disc, rear delog., front & rear bumper guards.

Stock #H1-8961 List \$10,400

USED 1983 CHRYSLER CLASS
\$7,195
Price excludes tax and license

4 door sedan, 4 cylinder engine, 2.2 liter, automatic transmission, AM/FM radio, power steering, power brakes, air conditioning, tinted glass, wire wheel covers, white sideall tires. Two tone tan. 26,229 original miles. Stock No. U5670

OPEN 'TIL 9 P.M. MONDAY THRU FRIDAY

CALL AHEAD FOR QUICK CREDIT APPROVAL
Same day delivery on these or any other vehicles on our lot.

BIGELOW MOTORS
50 Washington Ave., Belleville
759-4220
"Same Owners Since 1939"

OPEN MON-FRI 9 SAT 11-6

BACK PAIN NECK PAIN

IT COULD BE PINCHED NERVES

Pinched Nerves May Result In:

- HEADACHES
- LEG PAIN
- DIZZINESS
- NUMBNESS
- SHOULDER PAIN

WHY SUFFER NEEDLESSLY?

A SPINAL EXAMINATION CAN REVEAL IF YOU HAVE PINCHED NERVES

Most Insurances Provide Coverage

Health (Major Medical 80%) Liability (Auto Accident 100%)
Approved Workman's Compensation (on the job injury 100%)
* Most provide coverage with satisfied deductible

Bloomfield Chiropractic Center

858 Joralemon St. Belleville

759-3600

Dr. Gerald Mattia D.C.

Dr. Susan Guarino D.C.

PALMER
VIDEO OF BLOOMFIELD

Christmas Specials at Palmer Video

20% Discount On Our Gold Club.
Reg. \$100.00
NOW \$80.00

Also
Holiday Sales On
Movies
VCR's
TV/Stereo
Cabinets
All Video Tapes

71 Belleville Avenue
Bloomfield, NJ 07003
Phone: 761-9231

The Belleville Times

Serving Belleville Since 1909
Published Every Thursday
At 151A Washington Ave.
Belleville, N.J. 07109

Phone 759-3200

Publisher
FRANK A. ORECHIO
Assistant to the Publisher
Michelle Jeannotte

Annual Subscription
\$12.00
Senior Citizens
\$7.00

Fewsmith Church

Sunday, Fewsmith Memorial Presbyterian Church celebrated its 60th anniversary. The present pastor, Rev. Alfred W. Stone, Jr. and former pastors Dr. James K. Morse and the Rev. George L. Van Leuven have made major contributions to the quality of life in Belleville. Members of the Fewsmith Memorial Presbyterian Church have made their personal contribution to improving the quality of life in Belleville. We congratulate Fewsmith Church on the occasion of its 60th birth-

day, and with God's help and guidance, the Church, its present and future members will continue to make their presence felt in the community which gave the Church its birth.

Frank A. Orechio

Public Works Fire

The fire which destroyed the Public Works Department building also took with it the Department's records and equipment. Public Works Commissioner Joseph Grande estimates the loss at \$500,000.

The catastrophe also disclosed the fact that the town has no records of the building — either the original section or the 1970 edition. It is amazing that there are no plans, available for a municipal structure. The building was constructed in 1946 and later sold to the town. When the town acquired the property, the public officials of that day should have prepared "As

Built" plans and specifications. This is normal procedure in the private sector.

Township officials should now be on notice that there may be buildings in existence for which there are no plans available. This is a research project that should be a priority item. If no plans exist, somebody should be commissioned to create them.

Frank A. Orechio

Robert R. Ferguson, Jr.

For the past couple of months, there has been an ongoing campaign by "Independent Democrats for LaRouche" to defame one of New Jersey's most respected and leading citizens, Robert R. Ferguson, Jr., Chairman of the Board of First Fidelity Bank, N.A.

This political group uses innuendos as a license to lie.

In flyers distributed in New Jersey and South America, this political group asks who is Robert R. Ferguson, Jr.?

To those of us who know this gentleman, the answer comes easily. Bob Ferguson is one of America's most respected bankers. He is Chairman of the Board of the largest bank in New Jersey — a \$10 billion bank. Bob Ferguson was one of the group responsible for financing the Meadowlands Sports Complex despite the strenuous opposition of the Rockefeller's — led Chase Manhattan Bank. As much as anyone — Ferguson is responsible for the existence of the Meadowlands Sports Complex — a tribute to his tenacity and loyalty to the State of New Jersey.

Bob Ferguson has answered every call by every governor who called upon him for volunteer job service. Ferguson has been in the forefront in every effort to enrich the lives of the people

who call New Jersey home.

He is the mastermind who put together the largest bank merger in the State of New Jersey. Ferguson is known as a compassionate, straightforward banking executive. He is respected and admired by staff employees whose privilege it is to know him. Held in the highest esteem by our two U.S. Senators, Frank Lautenberg and Bill Bradley, Governor Thomas Kean has also, on occasion, extolled the civic contribution of Bob Ferguson.

The innuendos, half truths and outright libels of the "Independent Democrats for LaRouche" will not change the historical facts that surround the life and times of Robert R. Ferguson, Jr.

Fortunately, we are judged by what we do and who we are, and not by what someone might say about us.

Bob Ferguson stands tall in the opinion of New Jersey's most respected leaders. We share that view without reservation.

Frank A. Orechio



Senate Tribute — Senate President Carmen Orechio (second from right) sponsored a resolution last month which paid tribute to Navy Captain Richard David Mulligan (second from left), the commander of the battleship USS New Jersey. Pictured at Orechio's office in Trenton are (l-r) Mrs. Mary Bourke Milligan, Captain Milligan, Sen. Orechio and Navy Captain Joseph Azzalino.

Why is Cable Company Delaying Installation?

To the editor:

I consider myself a patient man, just like Job in the Old Testament. But there does come a time when that good virtue runs out.

This article will discuss a cable television company and other home services and why I've lost some patience with these groups.

It was over 10 weeks ago when I asked several local politicians for help in getting cable television into the Essex County Geriatrics Center in Belleville, where I am a resident. I'm happy to report my political friends did their job; the cable television company is a different story. They have not, as yet, come anywhere near this facility.

I'm told it takes about six weeks before they can check out a building to install cable television. Well, over a month has passed since that six-week period and there still hasn't been a word from them. I don't like to take a complaint like this to a public forum, but sometimes you have no choice.

My hope is this cable television company reads this article and makes an effort to install the system in this nursing home as soon as possible.

bie.

My childhood memories of home service people, such as plumbers, electricians or television repairmen, is that they responded when called. This doesn't seem to be the case today. I can think of a few reasons why this might be so: short staffs with fewer employees; being more interested in money than the service they perform and not taking pride in the work they do. There was a time when work was considered an art — it just doesn't seem to be so today.

Busy people who perform service work, think for a moment: how would it be if you were confined to a bed 24 hours every day? Then think that the service you perform could make life a little easier for these disabled people. If this article accomplishes anything, I hope it is this: that the red tape is cut and the service of installing cable television here is expedited. It would make a world of difference and provide much pleasure to those of us in the Geriatrics Center.

Sincerely,
Bill Rundle
Essex County Geriatrics Center
Belleville

President Reagan's Tax Plan Will Take Deductions Away

To the editor:

Someone let the cat out of the bag since President Reagan won a smashing victory over Mr. Mondale. His secret plan to reduce the deficit is no longer a secret. Some politicians in Washington have been considering the idea for more than a year. All homeowners, taxpayers and the working people will be let holding the bag. His promise not to raise taxes or reduce the Social Security checks was the due to his victory.

This is how it will work if it is approved by those in power. The taxes you pay on your homes to the city, the interest you pay on your mortgage to the bank, and the state and local taxes will no longer be a deduction on your federal 1040 tax form. This also includes your vacation home, rented or not.

This plan is harmful to millions of people nationwide so write to your senators and congressmen to defeat the plan. You will pay more tax dollars to the federal government without those deductions. I have only one voice and I cannot do it alone. We must help each other to prevent this rip-off.

Taxes in Belleville have gone up higher and higher every year. The

\$250 we receive under the Homestead Act has been wiped out by those tax increases and should be raised to \$500. I do hope some politicians with a heart will consider it.

Sincerely yours,
Albert Guglielmi
75 Lake St.

Bank Workers Thanked for Their Kindness

To the editor:

A special note of thanks to all the employees of Peoples Bank (Operation Center), 1442 Broad St., Bloomfield, for it is through their kindness and generosity toward the plight of the Porcella family of Belleville that they were able to celebrate Thanksgiving Day.

Sincerely yours,
Eleanor Gallucci
Peoples Bank (Operation Center)
Bloomfield

Letter Policy

Speak-Up! The Times welcomes letters from readers.

Readers submitting thoughts and opinions to the editor should, when possible, type letters with double spacing to avoid errors in proofreading.

The Times accepts letters on all subject, but cautions readers not to slander anyone when writing opinions on issues.

All letters must be signed and include the address of the writer in order to be considered for publication. Letters which deal with specific, topical issues of local interest receive priority on this page. The Times "Letters in Print" section is your open forum for issues. We invite you to use it.

Golden Comments

By James R. Golden



The old adage about coming events casting their shadow before them is true when it comes to the pending increased telephone charges resulting from the divestiture of AT and T. The federal court ordered the breakup placed the control of the telecommunications industry under the control of the Federal Communications Commission (FCC) with Mark Fowler the chairman. The agency voted in July 1983 to impose a \$2-month access charge fee on the phone customers starting Jan. 1, 1984 — rising to \$4 by 1986 — but that plan was scuttled in the face of a public congressional outcry.

Our contracts with New Jersey's Senator Frank Lautenberg and correspondence from him clearly spells out the significant role he played in having a moratorium placed upon access charges and an amendment creating "lifeline" fund that would provide rate relief for the poor and elderly on fixed incomes. He is committed to working for a gradual and successful transition to a new, competitive telecommunications industry that will not place an undue burden on New Jersey's consumers.

Notwithstanding, the furor of phone customers and the opposition of many congressional leaders over the access charge plan, FCC Chairman Mark Fowler is determined to invoke those charges. On Nov. 15, 1984 a panel of state and federal regulators, known as a special board composed of three FCC members and four state regulatory officials, proposed setting a telephone access charge for residential customers of \$1 a month in mid-1985 and \$2 a month beginning in mid-1986.

A critical element of the plan, details of which were reported earlier and officially submitted to the FCC, would give some large companies discounts on long-distance service. The cuts would go to corporate customers that local telephone companies can show might otherwise build their own telephone systems to avoid higher costs. If such discounts are approved, they would result in a monthly surcharge of 35 cents to the residential-access charge fee.

Nuts, to this! they even go on to say, no further increases in the basic monthly fee would be allowed until further studies were conducted. Big Deal! Residential phone users should not be expected to subsidize telephone companies and a concerted campaign must be undertaken to prevent the implementation of this cleverly conceived "rip-off" that will result in the forced payment for unused, unwanted access phone service.

Telephone access charges under no circumstances should be charged for the mere fact that a phone line connects the residential customer to the phone owned or rented by the user. The divested phone company, in this area is Atlantic Bell, to whom a monthly fee is paid for use of its owned and serviced line. In conjunction with its monthly charge for local call service, exclusive of toll charges, is an already paid for access charge for its line use...no additional charge, under any circumstances, for use of that line is warranted.

Now, if a long-line call is to be made, precedent establishes that the party making the call is charged, that party should be assessed the appropriated access charge, plus the toll charge for the call, on each individual toll charge outside of the local, already paid for use of the phone line is owned by and serviced by the divested Bell Company (Atlantic Bell).

In that matter, only those making toll calls outside the paid for local phone lines would be charged for use of the access phone lines required to complete the toll call. It is unreasonable to even consider charging all with a telephone line into their homes up to \$2.35 a month access charge when it's never used. Those who might make a few such toll calls could do so, but, would only have to pay the access charge for the calls made, not paying for unused phone service.



Library Donation — Cathy Wood (third from left) presents Larry Herman, Belleville High School librarian, with a \$1,000 check donated from the high school's Home and School Association. With them are Sue Iannini, Anna Marie Perna and Marlene Lemongello, members, and Joseph Ciccone, BHS principal. The association conducts a number of fund raisers throughout the year including card party-fashion shows and also sponsors a scholarship program for graduating seniors. All proceeds go directly to the students.

Library Honors Trustees For Dedicated Service

The Trustees of the Belleville Public Library recently honored trustees Kenneth R. Broo and Mrs. Richard A. Shaffer for their dedicated service to the library.

Shaffer has been a library trustee since 1959 and has been instrumental in the development of the Silver Lake branch library and staff concerns. Broo has been a

trustee for more than 24 years and provides managerial and budgeting expertise to the administration of the library.

Both Broo and Shaffer were given township proclamations from Mayor Michael V. Marotti and township commissioners for their time and effort in public library service.

Fruchtbaum Retires From Service Board

Dr. Robert Fruchtbaum retired as a dedicated member of the Board of Trustees of the Community Mental Health Services for Belleville, Bloomfield and Nutley. He served as vice president, president and most recently as treasurer of the board. Dr. Fruchtbaum had served on the Board of Trustees since 1977 and his active participation and concern for all aspects of community mental health services made him an invaluable member of the board.

Dr. Fruchtbaum has many accomplishments, among them a general practice of family medicine in Nutley from 1936-1965; service in the U.S. Navy, lieutenant senior grade, 1944-1946; school physician for Nutley Junior and Senior High Schools from 1946-1965; examining physician for the Nutley Red Cross Summer Swimming Program, 1964-1965; president of the Nutley Optimist Club, 1950-1951; member of the Board of Directors

of the Nutley Family Service Bureau, 1947-1963 and serving as its president from 1957-1961; and first chairman of the Nutley Community Council of the United Way, 1962-1965. He joined Hoffmann-La Roche in 1965 as assistant director of medical research and was also associate in the Department of Drug Regulatory affairs and associate director of professional services. He retired in 1963.

Dr. Fruchtbaum was also consultant to Roche (1973-1974) as Director of Community Referral Service, lecturing on health at Schering Plough Corp., Kenilworth and Exxon Corp., Bayway, N.J. from 1978 to present. Most recently he has been vice president of the Nutley Senior Citizen Housing Corporation. He has also maintained a staff affiliation with Clara Maass Medical Center since 1958 where he has been a revered emeritus staff member.



Recently Retired — Dr. Fruchtbaum (fourth from the left) retired as a member of the Board of Trustees of the Community Mental Health Services for Belleville, Bloomfield and Nutley. He served on the board since 1977. With him are (l-r) Mary Ann Hermo of Nutley, Toni Marone of Belleville, Leo Tusciano of Nutley, Paul Alongi of Bloomfield, and Dr. Harry Jelinek.

BHS Association Presents College Program Dec. 11

The Belleville High School Home and School Association will have its second meeting of the 1984-85 school year Tuesday, Dec. 11 at 7:30 p.m. in the school's auditorium.

"College Requirements" will be presented by the staff. Parents are urged to attend and learn about the various courses, tests, etc. which are required for entrance into college. Refreshments will be served.

The program for the evening,

LATERZA'S GOOD HEALTH PHARMACY

* HOLIDAY SALE *

20% Off Timex Watches

20% Off All Vitamins

20% Off Fragrances & Colognes

Also Savings On:

- Cameras • Waterpiks • Blow Dryers
- VCR Tapes • Shower Massage

If We Don't Have It ... We'll Get It In 24 Hours!

FREE

Stuffed Animal

\$25 retail value

Drawing to be held Sat., Dec. 22, 1984

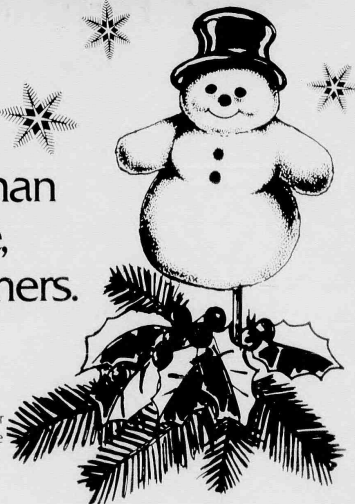
Entry Coupon

Name _____
Address _____
City _____ State _____
Phone # _____

SNOW FOOLIN'

Nutley Savings Offers A Stylish Frosty The Snowman Lapel Pin Pal, Free, To All Our Customers.

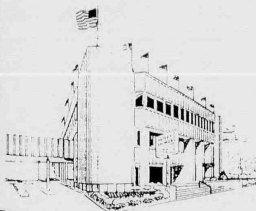
Nutley Savings continues its traditional expression of thanks to all its customers for their loyalty throughout the year by giving them this stylish 3" lapel stick pin to wear for the holidays. There is no obligation. Limit one stick pin per depositor while supply lasts.



Nutley Savings

AND LOAN ASSOCIATION

MAIN OFFICE:
371 Franklin Avenue, Nutley, N.J. 07110 • Phone: 661-3200
BRANCH OFFICE:
221 Washington Street, Newark, N.J. 07102 • Phone: 623-7390



For a gift they'll wear all year round, trust Pearle.

What better gift to give to your family and friends than one that lets them see the world better.

That's why glasses or contacts from Pearle Vision Centers make the perfect gift. You can choose the exact pair yourself. Or buy Pearle gift certificates and let them choose exactly what they want themselves.

You can trust Pearle for a gift that's sure to please, that'll be worn every day, all year long.

PEARLE
vision center

A SEARLE COMPANY

Nobody cares for eyes more than Pearle.

CHRISTMAS COUPON SAVE \$15.00 SAVE

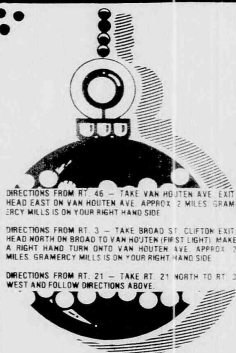
ON ONE PAIR OF CONTACT LENSES OR SELECTED FRAMES WHEN YOU RECEIVE AN EYE EXAMINATION

DR. STUART M. SCHIFFMAN O.D.P.A.

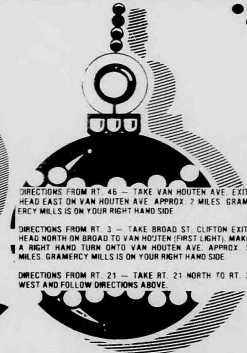
100 PASSAIC AVE., KEARNY • 997-0888

Coupon valid 12/11/84 - 12/24/84 • Not valid with any other discount

Coupon must be presented at time of sale



Holiday Specials at Gramercy Mills Outlet Dept. Store



OPEN 7 DAYS
Holiday Specials
at the
Gramercy Mills
Outlet Store

DON'T FORGET
TO VISIT
OUR NEW
TOY DEPARTMENT
(animals, dolls, trucks...)

FREE LAYAWAY

FASHION WINTER LADIES JACKETS
Reg. \$35.00

SALE \$14.97

SIZES S, M, L, XL, XXL

In our ladies dept. we have a full selection of jackets and coats at our crazy low prices.



LADIES GITANO STRETCH JEANS
Reg. \$25.00

SALE \$15.97

SIZES 6-20

We also have a large selection of Gitano cords in all sizes.



MENS FLANNEL SHIRTS
Reg. \$12.00

SALE \$5.97

SIZES S, M, L, XL

We also have a large selection of long sleeve dress & sport shirts in all sizes.



MEN'S THERMAL UNDERWEAR TOPS & BOTTOMS
Reg. \$5.00

SALE \$2.97

SIZES S, M, L, XL



MENS FASHION SLIPPERS
Reg. \$6

SALE \$2.77



TRIM-A-TREE LAND - X-MAS trees

Green Scotch Pines - 3 Ft.	Reg. \$20.00	SALE \$10.99
Green Vienna Pines - 4 Ft.	Reg. \$35.00	SALE \$13.99
Green Scotch Pines - 6 Ft.	Reg. \$50.00	SALE \$23.99

For trees we have a complete selection of lights

35 Light Sets Reg. \$5	SALE \$2.99	Assorted colors
50 Light Sets Reg. \$7	SALE \$3.99	
100 Light Sets Reg. \$12	SALE \$7.99	

All cards are already marked up to 50% off

Cabbage Patch Stockings Reg. \$5

SALE \$1.69

Complete selection of tree tops

Glass Ball Sets All Sizes Reg. \$4

SALE \$1.99

Complete selection of Xmas novelties already marked to 50% OFF

15 ft. 6 ply X-mas garland (all colors) \$1.59 ea. 2 for \$3.00

LINENS
Luxury 5 Piece Bathroom Set

Bath rug, tank top cover, contour rug, lid cover, Reg. \$25.00

SALE \$13.97

in 8 assorted colors



SHEET SETS 4 - Piece

Twin	Reg. \$9.77	SALE \$19.00
Full	Reg. \$14.77	SALE \$30.00
Queen	Reg. \$19.77	SALE \$40.00

assorted patterns

Contains: 1 Full size flat sheet, 1 full size fitted sheet, 2 standard pillow cases.



BOYS DEPT. HOLIDAY CLOTHES
already marked up to 50% OFF

Suits	2 - 20
Dress Shirts (White & Pastels)	2 - 20
Dress Slacks (Reg. & Slim)	2 - 20
Underwear (Thermal)	2 - 20
Dress socks, ties, belts and bow ties	

GIRLS DEPT. HOLIDAY CLOTHES
already marked up to 50% OFF

Holiday Dresses (Including Velvet)	2 - 14
Sweaters (Button down & Pull-over)	2 - 14
Slacks & Slack Sets	2 - 14
Panties, Fancy tights, socks, belts & slips	

INFANTS DEPT. HOLIDAY CLOTHES
already marked up to 50% OFF

Girls dresses	0 - 24 mos.
Boys sets	0 - 24 mos.

Complete selection of overalls, crawlers, sweaters, polo shirts, infant underwear, socks, bunting sets, blankets, booties, and complete layette department.

HEALTH AND BEAUTY DEPT.
Helena Rubenstein Blazer Gift Set

Reg. \$19.50

SALE \$2.99



CREST TOOTH PASTE
6.4 Oz.

99¢



HOUSEWARES 32 piece glass set
By Durand

Reg. \$20

SALE \$12.97



PERFECT GIFT ITEM

Complete selection of Corning Ware, Pyrex and assorted cook ware

20% OFF



SWEAT CITY UP TO 50% OFF

Complete selection of sweat apparel from infants, girls, boys, ladies, mens, hooded sweat shirts.

\$2.97 to \$7.97

Sweat pants - sizes infants to adults

\$1.97 & up

Sweatsuits - infants and adults

\$3.97 to \$14.97

We will beat any price in all our sweats. We also have crew, V-neck, screen printed, football in all colors & sizes.



FREE COUPON FREE COUPON FREE COUPON FREE COUPON FREE COUPON FREE COUPON FREE COUPON

Spend \$50.00 on any merchandise in store and receive **FREE \$10.00** worth of Christmas wrapping paper, gift boxes, bows, ribbons and Christmas cards

FREE



LADIES WEAR-MENS-CHILDRENS-INFANTS-LINENS-HEALTH & BEAUTY AIDS

Gramercy Mills OUTLET

NEW HOURS MON.-SAT. 9-9 - SUN. 10-6


Fully Heated

777-9842

OPEN 7 DAYS
LAY AWAY
Mon.-Sat. 9-9
Sun. 10-6

VISA

435 Van Houten Ave., Clifton/Passaic



FREE COUPON FREE COUPON FREE COUPON FREE COUPON FREE COUPON FREE COUPON FREE COUPON

Spend \$50.00 on any merchandise in store and receive a **FREE X-MAS TREE** - value of \$10.99



Mollie D'Agostino; Active Club Member

Mrs. Mollie D'Agostino, 78, a lifelong resident of Orange, died Dec. 1 in St. Mary's Hospital, Orange.

She was a machine operator for the Gold Seal Garment Manufacturing Co., New York City, for 30 years, retiring 13 years ago. Mrs. D'Agostino was a member of the Ladies Auxiliary of Our Lady of Mount Carmel Church, the Sherman Hall Senior Citizens, the Retired Senior Volunteer Program and the YWCA, all of Orange.

She was also a member of the Belleville Senior Citizens, the Orange-West Orange Ladies UNICO, the Edison Old Times of West Orange and the American Association of Retired Persons of Orange.

Mrs. D'Agostino was a member of the International

Ladies Garment Workers Union, New York City.

Surviving are her husband, Dominick, a daughter, Mrs. Angela Cozza, and four grandchildren.

M. Fawcett; Lived Here

Mrs. Margaret H. Fawcett, 66, of New Monmouth died Nov. 28 in the Riverview Medical Center, New Monmouth.

Born in Newark, she lived in Belleville and Nutley before moving to Middletown 30 years ago.

Surviving are her husband, Hugh S., a son, H. Raymond; a daughter, Mrs. Susan Stocker; a brother, George Hageman, and a sister, Mrs. Anne Winfield.

Obituaries

Bernard Dowd, 67; Former Firefighter

A Mass was held for Bernard J. Dowd, 67 of Belleville, in Our Lady of Good Counsel Church, Newark Nov. 21. Mr. Dowd died Nov. 18 in the Clara Maass Medical Center.

He served with the Engine Company No. 28 on North Sixth Street in Newark for 25 years. He then was assigned to the Newark fireboat, where he worked for seven years. Mr. Dowd retired from the fire department in 1979. He was a member of the Firemen's Benevolent Association 4 in Newark.

An Army veteran of World War II, Mr. Dowd had been the quartermaster of Veterans of Foreign Wars, Post 1851, Newark.

Born in Newark, he moved to Belleville eight years ago.

Surviving are two sons, Bernard J., Jr., and Kevin; two daughters, Mrs. Mary Rita Cridley and Miss Judy Anne; a brother, Thomas, and three grandchildren.

Services were held in the Kiernan Funeral Home, Belleville. Interment was in St. Peter's Cemetery.

Elizabeth Shaughnessy; Mass Held at St. Peter's

Mrs. Elizabeth F. Shaughnessy, 87, of Newark died Nov. 21 in the Clara Maass Medical Center, Belleville.

Born in Hoboken, she lived in Belleville before moving to Newark 22 years ago.

Surviving are four sons, James Patrick, Jr., Robert, Harold and Donald; three daughters, Mrs. Helen Foster, Mrs. Miriam Lynch and Mrs. Jean Kowalewski; three

brothers, Charles, Jr., Paul and Arthur Fabian; a sister, Miss Margaret Fabian; 12 grandchildren and 10 great-grandchildren.

A Mass was held in the St. Peter's Church, Belleville, following the funeral from the Kiernan Funeral Home, Belleville. Interment was in Immaculate Conception Cemetery, Upper Montclair.

Walter C. Wydro, 62; Worked at Kidde Corp.

A Mass was offered for Walter C. Wydro, 62, of Bloomfield last Monday in St. Francis Xavier Church, Newark. Mr. Wydro died Nov. 29 in the Clara Maass Medical Center, Belleville.

Mr. Wydro was a supervisor with the Walter Kidde Corp., an aerospace and fire equipment company in Belleville, where he worked for 43 years before retiring earlier this month. He served in the Army during World War

II. He was a member of the Father Owens Catholic War Veterans post and the Holy Name Society, both of St. Francis Xavier Church.

Born in Newark, Mr. Wydro lived in Bloomfield for 42 years.

Surviving are his wife, Antoinette; two daughters, Mrs. Carol Ann Spackman and Mrs. Suzanne Burns; a brother, Robert, and one grandchild.

Kenneth Perine, at 80

Kenneth F. Perine, 80, of Belleville died Nov. 16 in the Clara Maass Medical Center, Belleville.

Mr. Perine was a truck driver for the Railway Express, Newark,

for 15 years before retiring in 1962. Born in Newark, he lived in Bloomfield before moving to Belleville three years ago.

Surviving are his wife, Maude P.; three sons, Robert, Kenneth L. and William E.; three daughters, Mrs. Joan LoConte, Mrs. Lynnann McCormick and Miss Belleanne; six grandchildren and three great-grandchildren.

A Mass was held in the Sacred Heart Church, Bloomfield,

Edwin Carey, 64; Softball Supervisor

Edwin Carey, 64, a lifelong resident of Kearny, died Nov. 26 in the West Hudson Hospital, Kearny.

Mr. Carey was a machinist with the John B. Greulich Co., Belleville, for 10 years before retiring. He was supervisor of the Kearny Senior Men's Softball Leagues for the past 27 years. He was honored last October by the town of Kearny, which named a recreation field after him. He was also chairman of the Deborah Heart and Lung Association Softball Tournament.

Mr. Carey served in the Navy during World War II and was a member of the Veterans of Foreign War Post 1302 of Kearny.

Surviving are his wife, Dorothy, and four daughters, the Misses Catherine and Judith, Mrs. Elaine Doner and Linda Cifelli.

A Mass was held Nov. 29 in St. Stephen's Church, Kearny. Interment was in Holy Cross Cemetery, North Arlington.

C. Argyros, 77

A Mass was offered in St. Mary's Church, Nutley, for Mrs. Catherine Argyros, 77, of Belleville. Mrs. Argyros died Dec. 2 in the Clara Maass Medical Center, Belleville.

Born in Orange, Mrs. Argyros lived in Belleville for 26 years.

Surviving are two daughters, Miss Mary Argyros and Mrs. Terri Spatola; two sons, Harry and Frank; a sister, Mrs. Marie Vacca; six grandchildren and three great-grandchildren.

Interment was in Gate of Heaven Cemetery, Hanover.

LET TAXES BE YOUR GUIDE
think about the past,
then the future, then think

REAL ESTATE!

Unique Investment Opportunity

BridgeBrooke
at Belleville

1, 2 Bedroom
Condominiums
w/pool & garage
Fr. **\$49,900**

And as a real estate owner you'll enjoy:

- Guaranteed Monthly rent!
- Important tax advantages!
- Property Value appreciation!

Opportunity for You to become an owner of REAL ESTATE with very little money down!

govel
REALTORS
201 751-7500

727 Joralemon Street, Belleville, New Jersey 07109

PUT YOUR IRA IN GOOD HANDS.

"Call me. I may just have a better way to make your money work for your future."

Jim Norton
369 Broad St.
Bloomfield
429-0335

Allstate
You're in good hands.
Allstate Life Insurance Company
Northbrook, Illinois

Casa Turano
GRAND OPENING
Thursday, Dec. 6th 4-8

Free Slices

Holiday Catering For Your Office & Home Parties
Seafood Specials

32 oz. SODA FREE WITH PIE

Catering For All Occasions
Pizzeria & Ristorante

COUPON
Pick Up Only
Month of December
Monday - Tuesday - Wednesday
BUY ONE PIE GET ONE FREE

WE DELIVER CALL
759-1820 748-6834
69 Belleville Ave. Bloomfield
Forest Hill Manor Shopping Center

WAREHOUSE WIPEOUT

BECK'S T.V. & APPLIANCES

SUPER VALUE
WAS \$799⁰⁰
Dealer Cost \$619⁰⁰
YOUR COST \$498⁰⁰
Start Your Own Movie-Albums
In Color Stereo Sound

MAGNAVISION
LaserVision Videodisc Player
• Interactive programming • Stereo capability • CX noise reduction system • Random access • Infrared remote control • Special effects • Laser pickup • Home computer applicable • VCB010CH

9" COLOR TV
Home, Car or Boat or Van
WAS \$399⁰⁰
Dealer Cost \$293⁰⁰
NOW \$269⁰⁰

Model 4012

LIMITED TIME OFFER
Was \$399⁰⁰
Dealer Cost \$309⁰⁰
NOW \$279⁰⁰

CE4137
MAGNAVOX
Made in U.S.A.

VHS VIDEO CASSETTE Player and Recorder
Wire Remote
Was \$489⁰⁰
Dealer Cost \$424⁰⁰
NOW \$389⁰⁰

VR8400

Largest selection of 25" TV's with doors or without doors.
All Made in U.S.A.

ALSO
Stereo Floor Samples
Not 10% to 40% Off
But 40% to 60% Off

Beck's T.V. & Appliances
196 Franklin Ave. Nutley Center
667-4225

[illegible]

These are just some of the Hundreds of Specials in the New Price Finder for Specials.

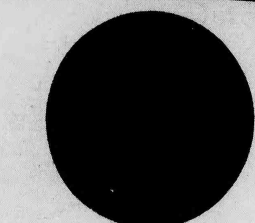
U.S.D.A. Choice Genuine Fresh American
Leg of Lamb
Oven Ready Whole Lb. **159**

Regular or Sugar Free
Canada Dry **Ginger Ale**
2-Liter Btl. **99^c**

Chiquita, Dole and Other Brands
Golden Bananas
4 Lbs. **99^c**

Snack Crackers
Sunshine Cheez Its
1-Lb. Pkg. **129**

Grand Union Price Finder for Specials



Contains All the Specials
in the Store.
Look for the Red Dots
on the shelf.



U.S.D.A. Choice - Boneless Beef
Shoulder Roast
Lb. **177**

Super **GRAND UNION** Coupon
Assorted Varieties
Pillsbury Plus Cake Mix
One 1-Lb., 2 1/4-oz. Pkg. **39^c**
No Minimum Purchase Required With This Coupon.
Good Dec. 2 Thru Dec. 8. Limit One Coupon Per Customer.

Super **GRAND UNION** Coupon
Brisk - Flow Thru
Lipton Tea Bags
One Pkg. of 100 **169**
No Minimum Purchase Required With This Coupon.
Good Dec. 2 Thru Dec. 8. Limit One Coupon Per Customer.

Super **GRAND UNION** Coupon
Regular or Diet
Vintage Cola
One 2-Ltr. Btl. **29^c**
No Minimum Purchase Required With This Coupon.
Good Dec. 2 Thru Dec. 8. Limit One Coupon Per Customer.

CranRaspberry Drink or Cocktail
Ocean Spray **Cranberry Juice**
1-Qt. 1-Pt. Btl. **149**

THE BUTCHER BLOCK

Grade 'A' Fresh Roaster
Perdue Oven Stuffer Roaster
5 to 6-Lbs. **77^c**

U.S.D.A. Choice Genuine Fresh American
Shoulder Lamb Chops
Blade Cut Lb. **177**

Fresh Duckling 99^c
Maple Leaf - with Orange Sauce 4 to 5 Lbs. Avg. Lb.
Turkey Breast 339^c
Louis Rich - Grade A - Tenderloin Lb.
London Broil 187^c
U.S.D.A. Choice - Boneless Beef Shoulder Lb.
Chuck Roast 159^c
U.S.D.A. Choice - Semi-Boneless Beef Lb.
Ground Beef Fresh 127^c
Signature - 3-Lb. Roll Ea. Lb.

Rib Lamb Chops 349^c
U.S.D.A. Choice Genuine Fresh American Lb.
Loin Lamb Chops 369^c
U.S.D.A. Choice Gen. Fresh Amer. - Thick or Thin Lb.
Pork Chops 297^c
Center Cut Fresh Pork Loin - Boneless or Roast Lb.
WHOLESALE SAVINGS
Tenderloin Whole 329^c
U.S.D.A. Choice - Boneless Beef 5 to 7 Lbs. Lb.
Untrimmed Cry-O-Vac. Custom cut

Family Pack Savings
SALE 10 A.M. ON PKGS. OF 3 LBS. OR MORE

Pork Chops 147^c
Pkg. contains 3 chops, 3 ribs and 3 chops
Cumb. - Loin, Rib End & Center Cut Ea. Lb.
Chicken 117^c
Holly Farms - Combo - Grade A Fresh
3 breasts split with ribs, 3 drums, 3 thighs Ea. Lb.
Chuck Cubed 199^c
U.S.D.A. Choice - Boneless Beef Steak Ea. Lb.

THE BIG FREEZER
Ronzoni Ravioli 99^c
Cheese 13-oz. Pkg.
Chicken Pot Pie 79^c
For 8-oz. Pkgs.
Sealtest Sherbet 129^c
Assorted Flavors 1-Qt. Cont.

PRODUCE

Crisp
Fresh Tender Brussels Sprouts
10-oz. Cont. **79^c**

Anjou Pears 59^c
Sweet Luscious Lb.
Fresh Spinach 79^c
Crisp - Nutritious 10-oz. Pkg.
Oranges 59^c
For Florida Sweet Juice - Large 80 Size
Fresh Eggplant 59^c
Florida Lb.
Avocados 299^c
Florida - Large 2 For

GROCERIES

Regular or No Salt Added
Green Giant Niblets Corn
2 12-oz. Cans **79^c**

Sliced or Halves Peaches or
Del Monte Lite Fruit Cocktail
1-Lb. Can **69^c**

Star-Kist Tuna 69^c
Chunk Light - In Oil or Water 6 1/2-oz. Can
Milk Evaporated 89^c
Assorted Flavors 12-oz. Cans
Log Cabin Syrup 159^c
Regular 1-Pt., 8-oz. Btl.
Hefty Trash Bags 129^c
Cinch Sak Pkg. of 10
Cycle 39^c
Dog Food Assorted Flavors 14-oz. Cans

Hi-C Fruit Drink 59^c
Assorted Flavors 1-Qt., 14-oz. Can
Coke 6-Pack 199^c
Reg. or Diet 12-oz. Cans
Rice & Sauce 69^c
Lipton - Assorted Flavors 4 1/2-oz. Pkg.
Dr. Pepper 169^c
Reg. or Sugar Free 2 Liter Btl.
Wisk Detergent 299^c
Heavy Duty Laundry Liquid Half Gal. Cont.

THE CORNER DELI

IN STORES WITH SERVICE DELI

Chicken Barbecued 149^c
Tender 1/2 Lb.
Hard Salami 179^c
Margherita Quality Half Lb.
Deli Bologna 119^c
Schickhaus or Braunschweiger Half Lb.

GRAND UNION Coupon

20^c Off
With This Coupon And Purchase Of One 1-Qt. Jar - Kraft
Miracle Whip Salad Dressing
Coupon Good Dec. 2 Thru Dec. 8. Limit One Coupon Per Customer.

GRAND UNION Coupon

30^c Off
With This Coupon And Purchase Of One 8-oz. Jar - Classic, Bravo, Silka or Decaff. Custom Blended
Nescafe Instant Coffee
Coupon Good Dec. 2 Thru Dec. 8. Limit One Coupon Per Customer.

DATE-LINE DAIRY

La Yogurt 39^c
Assorted Flavors 6-oz. Conts.
Sour Cream 99^c
Axelrod 1-Lb. Cont.
Fruit Punch 119^c
Sunny Delight - or Citrus Punch Half Gal. Cont.

HEALTH & BEAUTY

Flex Shampoo 179^c
Revlon - or Conditioner 15-oz. Cont.
Mousse Foam 299^c
Alberto VCS 6.3-oz. Cont.
Aqua-fresh 179^c
Toothpaste 8 2-oz. Tube

Always in Good Taste...
GRAND UNION GIFT CERTIFICATES
Available in \$10 and \$20 denominations at the Courtesy Booth.

GRAND UNION

MOST GRAND UNIONS ARE
OPEN 24 HOURS
Check your local Grand Union for store hours.

Prices effective Sunday, Dec. 2 thru Saturday, Dec. 8 at all Grand Union stores in New Jersey, Rockland and Orange Counties. In order to assure a sufficient quantity of sale items for all our customers, we reserve the right to limit sales to 3 packages of any item unless otherwise noted. Not responsible for typographical errors. For store information call toll free, 1-800-221-1835.
Main Street, Belleville - 24 hrs. daily: Sunday, 8 a.m. to 9 p.m.; 505 Atwood Rd., Clifton - 7 a.m. to 11 p.m.
Monday thru Sat.: 8 a.m. to 7 p.m.; Sunday: 7 to 10 p.m. Bloomfield Ave., Glen Ridge - 24 hrs. daily: Sunday, 8 a.m. to 7 p.m.

Belleville Times SPORTS

Buc Football Squad Finishes Season 6-4

Season Highlighted by Playoff Berth; Tough Wins Over Passaic and Clifton

By Mike Lamberti

Playing against one of the toughest schedules in school history, the Belleville football team finished the 1984 season with a 6-4 record, highlighted by victories over Passaic and Clifton on successive weeks entrance into the Group IV, Section II playoffs, the seventh straight season of winning football and a perfect place showing in the NNJIL, losing the conference crown by one-half game to Clifton and Montclair.

"The difference between a good season and a great one was beating Nutley," said head coach John Senesky. "A win over Nutley would have been outstanding. It would have meant conference title, seven wins and would have capped off a fine season. It was still a good season, no doubt, but beating Nutley would have made it perfect."

The coach, of course, refers to the 19-6 setback to the Ramon Raiders on Thanksgiving Day, finishing the Buc's season with three straight losses. The last time that happened was in 1977. The Bucs were shut out three times this season, the most since 1977. Losing to Nutley marked the first time since 1977. The Bucs 42-0 setback to Union in the playoffs was the worst setback since that infamous '77 campaign. However, there were plenty of good things to cheer about.

The Bucs battled six teams with winning records. Four of those clubs went to the playoffs of their respective groups. One of them, Don Bosco, won the Parochial A crown over Bergen Catholic for the second straight year. Belleville shutout Don Bosco, 14-0, on opening day, the only team to blank the potent Bosco offense all season long. While four of Belleville's opponents went to the playoffs, a fifth, Passaic just missed, finishing with a 7-2 record.

The 1984 campaign started with the victory over Don Bosco on the beautiful Bosco campus in Ramsey on a very hot day. The Bucs prevailed on an Anthony Gizzo fumble recovery for a touchdown and a late score by

Michael Gibbons that sealed the game.

On week two, Belleville hosted a powerful team from Bergen Catholic and finished on the short end of a 21-0 count. Nothing went right for the Bucs in this game as Bergen Catholic played a picture perfect contest and used its tremendous size advantage to the maximum.

The following week, Belleville traveled to Paterson and blanked Eastside, 26-0. Gibbons did a fine job in this game, scoring two touchdowns and the Belleville defense played a solid game.

Coming home, the Buccaneer offense played its finest contest of the season, running up 35 points en route to a 35-6 romp over Bloomfield. Gibbons, once again,

(Please see "Bucs" on page 12)

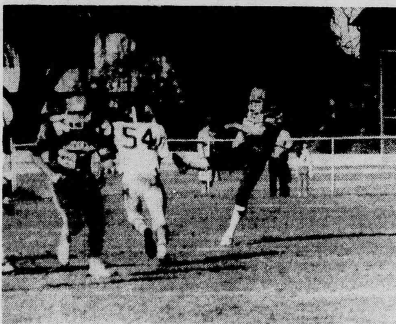
Chiefs and Jets Win Titles in Rec Football

In Division A of the Belleville Recreation Football League, Nick Turano had three touchdowns to lead the undefeated Chiefs to their second consecutive league championship, defeating the Steelers, 26-0.

Tim Writt and John Stumpone also added scoring for the Chiefs. The Steelers under head coach Bob Haug, gave a valiant effort. The Chiefs were coached by Fred Marra, assisted by Nick Turano, Sr. and Bob Marione.

In Division B, the Jets beat the Chargers, 7-6, in a very memorable game that went to sudden death.

The Jets, behind the running of Larry Marotte, gained the advantage and added the extra point to give the Jets the championship. The Jets, under head coach Earl Wake, have won the playoffs five consecutive years. The Chargers, under head coach Mark Roll and assistants Mike Russell and Joe Veneziano, won the league championship last year.



Top Punter — David Long gets off a punt during the season finale with Nutley on Thanksgiving Day. Long was recently cited by the NNJIL for his fine kicking, earning first team honors.

Experienced Wrestlers Returning to '84 Squad

Gene D'Alessandro is a man who takes nothing for granted. Despite the fact that the varsity wrestling team is returning a strong nucleus from last year's 15-0-1 squad, the head coach says this team needs a lot of work and he doesn't know what to expect.

The Bucs will open the 1984-85 season by competing in the Essex County championships on Dec. 15 and 16 at the friendly confines of Belleville High School. A number of familiar names sprinkle through the strong Buccaneer lineup. If the team can avoid injuries, they should be in. The good shape. "We had a scrimmage with Hanover Park last weekend," D'Alessandro said. "It was a good workout for the kids. Some of our weight classes were really tested. Hanover Park was a very decent team."

The coach will enter his ninth year of leading the Belleville wrestling program. He has had marvelous success throughout that period and will be favored to continue that trend this year.

At 101 pounds, freshman Joe Cerreto and sophomore Mike Kraus are vying for the starting position. At 108, Tim Buckley, a sophomore, and Phil Zamlot are battling for a spot. Buckley was a starter at 101 pounds last year.

At 115, the position is virtually a lock for senior Dominick Cerreto. "He has a chance to be the winningest wrestler in Belleville history," D'Alessandro said. Cer-

reto had a marvelous season last year, finishing with a 26-2 record and advancing to the regionals.

In the 122 pound class, senior Vin Padula returns and will be tested by a very talented freshman named Armando Nardone. D'Alessandro sees a lot of good things from Nardone in the future. "He had a couple of undefeated seasons in the lower levels," the coach said.

Moving to 129, Mike Iacona, a junior, seems to have the inside track. The same can be said of senior Cam Rispoli at 135 pounds. As a junior, Rispoli started off strong, then suffered an injury that put him on the shelf for a good portion of the season. Now healthy, Rispoli should be very effective.

Luke Silletti is the top man at 141 pounds, but the senior is battling a knee injury at the moment and could miss the first two weeks of action.

Senior Ralph Zarro, coming off a fine season last year, should be the man at 148 pounds. Zarro won 15 matches last season.

Moving to 158 pounds, Sam Zamlot, a senior, Eric Davidson, a senior, and Dave Silletti, a junior, will be fighting for a starting position. The 170 pound class will feature junior Sean Mulcahey, a junior varsity champion last year. Mulcahey, a promising football player, has a

(Please see "Varsity" on page 12)

'84 Basketball Team Prepares for Season

He isn't ordering the county championship jackets yet and he isn't shooting for 20 victories, but new head basketball coach Rocco Colucci is promising a "competitive" team as the 1984-85 campaign rapidly approaches.

The Bucs will open the season with a home game against Bergen Catholic, starting at 7:30 p.m. Dec. 14. The following day, in a rare Saturday evening start, the team will travel to Wood-Ridge for a 7:30 p.m. tip.

Colucci enters his new job with a world of enthusiasm and it seems to have spread over to his players. The team has approached the practice sessions with a great deal of optimism.

"Our goal is to be super aggressive on defense and run a patient and effective offense," the new mentor said. "I'm expecting the kids to give 110 percent on the floor. We'll be up against some very good competition and will have to give it our best."

Already, Colucci has seen his team in action against other varsity competition. Last Friday afternoon the Bucs faced off with Harrison and came away a winner in a six-quarter scrimmage. "There is a lot of work to do," Colucci said. "The kids know that I expect more of them than they showed against Harrison. There was some disorganization out there, but that is expected in the early going."

The coach is working with a young team, keeping only four seniors and two juniors. The four underclassmen will play a major role in the team's success this season. Forward Mike Sochaski, forward Steve Kimble and guards Dan Riordan and Nick Sotomayer return, and a great deal of varsity experience.

Sochaski, after a strong campaign in the summer league, will use his 6'3" frame to hit the boards against the big competition the Bucs are sure to run into. Last season, a serious ankle injury and lower back problem curtailed his playing time, but the senior is in good shape now and should be a big contributor.

Kimble, at 6'11", can be nicknamed the "Wall" for his excellent conditioning and strength. "I don't think too many people want to run into Steven," joked

Colucci. "He's a tank. He comes off a solid football season and will be a big help up front." Kimble saw a great deal of varsity competition last year and will probably start at a forward spot.

Riordan and Sotomayer have seen time in the varsity back court and form a good combination. Both men are good ball handlers and will be expected to run the Buccaneer offense.

Juniors Donald Washington (6'3") and Dominick Mastro (5'11") will also help. Washington has an abundance of talent and has a good touch with his jump shot. He is also a hard worker and excellent athlete. Mastro, "comes to play" according to his coach, and is learning to play guard after starting his career as a forward.

Colucci is especially happy

(Please see "Competitive" on page 12)

Cosmos Meet Aztecs in Rec Soccer Playoff

The unbeaten Aztecs were held off the scoreboard not only the normal 36 minutes of regulation time but through an additional overtime period before they defeated the Cosmos, 2-0 in Belleville Recreation Department's Division B soccer league.

Cheryl Thomas played excellent in the midfield and James Berg played excellent up front for the Cosmos, but they just couldn't put the ball in the goal. Brian Travers scored for the Aztecs with three minutes left in the second overtime and Darren Zullo scored 40 seconds later to put the game away.

In other action the Cosmos continued their roll to the championships with a convincing win over the Lancers. Michael Mundy had another fine game and Jeff Vogel couldn't get the ball going to get the needed goals for the Lancers. Greg Grodinger had another fine game scoring three goals and Bruno D'Uva had the other to bring up the rivalry of the year.

The Cosmos won 4-0 and the Aztecs won 2-0 and will meet for the tournament championship.

michael lamberti's BUC SHOTS

Five Buccaneers Named Athletes of the Month

When you look back on the 1984 football season at Belleville High School, a number of athletes come to mind that made solid contributions to the team's success.

Naming an athlete of the month for November is difficult because so many players made excellent contributions. For argument's sake, let's name Bob Mozeika, Mark Walsh, John Apicella, Dave Long and Steve Kimble as the athletes of the month. All five men were vital to the team and ended the season with excellent performances.

Mozeika was named to the first team, NNJIL, for his play on the offensive line. The senior was praised by head coach John Senesky for his season. "Bobby is an excellent high school lineman," Senesky said. "He has a good future in the small college game. He was a hitter all season long and a class athlete at all times. He had tremendous heart and really led this team."

Also named to the first team, NNJIL, was senior fullback Michael Gibbons, senior Mark Walsh at quarterback and junior David Long for his punting ability.

Gibbons rushed for over 700 yards this season and led the team in scoring. "He was hit on every play, both on offense and defense," Senesky said. "As a fullback, he was either running the ball or blocking. Then, on defense, he played nose guard and was double teamed on a number of occasions."

Walsh, one of the best defensive safeties in team history, will be sorely missed. "He was like another coach on the field," Senesky said. "He will be

highly recruited by some big schools. He has the height (6'4") and the weight (190 pounds and growing). Colleges are recruiting athletes now, not necessarily for positions. If they see a good athlete, they'll take him. Mark has all the characteristics, good height and weight. He gave us three solid years."

Walsh was an effective quarterback because he could run so well. Schools such as Maryland, Michigan, Massachusetts and Clemson are looking at Walsh for next season.

Long, a junior, was a tremendous punter and did an excellent job playing linebacker. "Long has the ability to have a tremendous season next year," Senesky said. "He did a very good job for us."

On second team, NNJIL, was senior John Apicella. "He was the best conditioned athlete on the team this year," praised Senesky. "As a matter of fact, he is one of the best conditioned athletes that we've ever had here. John was one of our leaders, he did everything we ever asked of him. He was a 1,000-point scorer on our decoration. We usually judged our workouts on John. When he got tired, you knew it was time to quit. He was a super athlete."

On defense, Kimble was named to the first team for his play at defensive end and senior Anthony Gizzo was named to the second team for his play at linebacker. Kimble was a very consistent performer the entire season. At tight end, he had very good hands and on defense, he was an imposing figure for opposing runners to try and clear.

Gizzo has excellent speed and turned into one of the most durable players on

the team. He scored two touchdowns and made his presence felt on defense.

On the honorable mention list was senior John Olivieri and Gerald Kraus. Olivieri was named for his play on offense and Kraus for his work in the defensive secondary. Olivieri scored the big touchdowns in the Passaic and Clifton games, but was hampered by a shoulder injury late in the season. Kraus, a hard hitter, was a fine receiver and excellent safetyman.

The offensive line did a solid job all season long. Ed Stangel at center, Steve Tribuna, Apicella, Dominick Di Paolo, Bob Mozeika and Ralph Chimento formed one of the best offensive lines that Belleville has ever possessed. Wide receiver Amro El-Helw made some nice catches this season, coming through with some key receptions to keep drives alive. Before his injury, Jim Caponi was doing a fine job at defensive end. Caponi's season ended with a broken rib in the Paterson Kennedy game.

Fiers Dominick Di Paolo was having an excellent campaign until a knee injury in the Kennedy game ended his season. Di Paolo was a fine offensive lineman and outstanding linebacker.

Senior Mike Deblak did a nice job at linebacker. Joe Feith was strong in the secondary, making two key interceptions in the Passaic contest that preserved the victory. Senior Dave Donnataria did a tremendous job on the line and scored a touchdown in the victory over Paterson Eastside.

Senior linebacker Bobby Charles continued in the long line of fine Charles' athletes. Bob did a good job as

linebacker and also did work as a placekicker. "Bob stepped in at a critical time and did a fine job," said Senesky.

Underclassmen Jim Dunphy, Sean Mulcahey and Dave Silletti will be looked upon to lead next year's team. Dunphy and Mulcahey both saw time in the offensive backfield and should be there next season. Silletti is a fine defensive player and did a very good job this season.

With a 6-3 regular season, John Senesky's record at Belleville High now stands at 15-20-1. The Bucs have been to the playoffs four of the last six seasons and twice in the last three years. Congratulations certainly is extended to the fine seniors that were such a vital part to this year's team. It won't be the same without Olivieri, Gizzo, Gibbons, Walsh, Apicella, Mozeika, Di Paolo, Chimento and Kraus, but the Bucs will have a new crew on the field next year, giving us new memories and excitement to fill our Saturday afternoons.

Next week we will have the Buccaneer Honor Roll for the 1984 fall semester. It's our tribute to the student athletes at Belleville High School for the past season.

The winter sports at BHS are in full gear now. The basketball teams will begin the regular season Dec. 14 and the wrestling team begins competition with the county tournament, at Belleville High School, Dec. 15. The boys' basketball team, under Rocco Colucci, looks pretty good. The new coach has a good blend of youth and experience on this year's team. The Bucs have been very enthusiastic in the early going and



will face a tough schedule. Teams like Paterson Kennedy, Paterson Eastside, Montclair, Nutley and Passaic should certainly provide a steady test for the Bucs.

There is life after Jennifer Apicella for the girls' varsity basketball team. Athletes like Desiree Johnson, Sheri Phelps, Cheryl Mahan and Donna Brooks should keep this team in good shape. Karen Fucello might surprise a few people this winter with a very competitive team. The coach lost a lot to graduation last year.

As for the wrestling team, Gene D'Alessandro has a solid team returning to the mat. The Bucs were 15-0-1 last year and should do pretty well this season.

Here is the answer to last week's quiz. The question was, name the participants in the 1981 Sugarbowl and Rose Bowls and the MVPs in both games. The answer: Georgia played Notre Dame in the Sugar Bowl with Herschel Walker as MVP. In the Rose Bowl, Michigan and Washington were the participants, with Butch Woolfolk of Michigan the MVP. Georgia beat Notre Dame, 17-10 and Michigan stopped Washington, 23-6.

For this week's quiz, name the last time the Jets lost to the Giants in regular season play before last weekend's Giant victory. Also name the quarterbacks in the last Giant victory and the team records that year.

'Competitive' Season Awaits Young Team

(Continued from page 11)

with the play of his freshmen and sophomores. Last season, Colucci coached the Suburban Basketball League for seventh and eighth graders and led that team to an 18-1 record and championship of the league. He is very familiar with the talent that these young men have and looks forward to coaching them on the varsity level.

Freshman guard Leon Puentes and freshman forward Ted Sochaski should see time on the varsity this year. "Puentes has potential, he is still in the learning stage," Colucci said. "Sochaski also has a lot of talent, it's just going to take time to learn the varsity system."

The coach also sees a talented sophomore named Corey Wells that could fit in well with the Colucci mold. "There will be a lot of time given to the players," the coach continued. "Experience is what's needed now. I see a lot of good things from this group, but we have to take it one game at a time. I'm really pleased with the enthusiasm that the kids have shown. Practices are going real well and everyone is taking an active part."

Conditioning will also be a factor. The coach has his players running hard during practice, both wind sprints and longer distance running. "Pride is the key word," he said. "You have to have pride in being an athlete and to go the extra yard. The kids are clapping during the drills and giving that little extra. It can go long way."

The coach is also going all out with the scrimmages this fall. Yesterday, the team battled with

Rahway and Newark West Side in a trim tri-scrimmage at Rahway. The Bucs will host Hackensack tomorrow, starting at 4 p.m. from BHS. Next Monday, the team will host North Arlington, starting at 4 p.m. and Tuesday, will play host to a powerful team from East Orange, also at 4 p.m.

While it is early, the signs look good for coach Colucci and his new program. Only time will tell how good this team can be.

Volleyball Actions Starts In Belleville

In week two of the Belleville Recreation Department Men's Volleyball League the Belleville Political and Social Club evened it's record at 1-1 as it turned back Perfection Knife (1-1), 12-15, 15-13, 15-9.

Raising its record to 2-0, Sub-N-Stuff topped Vito Sylvestro's Garden Market, 5-15, 15-6 and 15-8.

Winning its first contest of the year Mystery (1-1) bumped M.D.A. and Co., 15-5, 15-5. De Lorenzo Construction is still undefeated as it defeated "The Slams," 15-10, 15-10.

In opening night of the Belleville Recreation Department Men's Volleyball League, De Lorenzo Construction/Heat turned back MBA and Co. 15-5, 15-3 to capture their first victory in the young season.



Full Steam Ahead — Tight end Steve Kimble has the ball and is a handful for a Nutley defender to bring down. Kimble scored the Bucs' only touchdown in the Nutley game. He later earned first team, NNJL, for his efforts.

Varsity Wrestling Team Begins Season Dec. 15

(Continued from page 11)

lot of talent and should do an excellent job.

Need you ask who will fill the 188-pound class. Senior Michael Gibbons, one of the best all around athletes at BHS this year, will more than fill the bill. Last year, he won his first 26 matches, advancing as far as the regional finals before losing a controversial match. Gibbons advanced to the state tourney, losing to the eventual state champion. Gibbons is coming off a fine football season and is in excellent condition.

The heavyweight slot will feature sophomore Marc Criscone. As a freshman last year, Mark posted a .500 record against some very good competition and this year, he should be a very effective athlete in the unlimited slot.

D'Alessandro also pointed out that seniors Steve Ferrara (129) and Dino DiGregorio (108) are vying for positions. It should be a very competitive team that takes the mat for BHS this year, continuing the long line of fine Bucs career wrestling teams.

Bucs' Playoff Berth Highlights Season

(Continued from page 11)

was unstoppable and Anthony La Bruza scored his first varsity touchdown late in the game.

With its record at 3-1, Belleville played host to Passaic in what turned out to be another thriller in the long line of Belleville-Passaic football games. Passaic had come in with a 4-0 record and had not lost a game since Thanksgiving Day 1982. Furthermore, the powerful Indians had lost just four games over the last five seasons, three of those setbacks coming to Belleville.

The Bucs scored first when quarterback Mark Walsh hit John Oliveni with a 23-yard touchdown pass and held on for a 7-0 win. The victory instilled a great deal of confidence to the Buccaneers as they traveled to Clifton for another crucial game.

The Bucs faced a mammoth squad from Clifton in week six and needed everything they could muster to win, 7-3. The only touchdown came on a Walsh to Oliveni pass in the second quarter after Clifton had tallied a field goal. Walsh played an outstanding game on both sides of the field and Gibbons was excellent as he Bucs mustered to 5-1.

The team traveled to Paterson to face Kennedy in week seven and although they won, they would lose a great deal. No less than five starters would hit the shelf with injuries during the 19-7 win. Defensive end Jim Caponi went down with a broken rib and missed the rest of the season. Lineman Dom Di Paolo suffered torn knee ligaments and would miss the remainder of the season. Running back John Oliveni re-injured his shoulder and was never 100 percent again. Lineman Ralph Chimento suffered torn ankle ligaments and missed the Montclair game.

The Bucs, with a 6-1 record and assured play off berth, battli d Montclair in week eight with five

starters out with injuries. After playing the first half scoreless, the Mummies broke the contest open in the second half and won, 28-0. The loss sent Belleville to Union for the first round of the Group IV, Section II playoffs the following week.

Needless to say, the Bucs were overmatched in the Union game. The final score was 42-0 as the Farmers who would win the state title last weekend over Montclair, ran at will. The Union team had a perfect blend of speed, size and strength and were just too much for the Buccaneers.

Then, of course, came the 19-6 loss to Nutley on Thanksgiving Day that ended theseason for Belleville. Walsh hit Steve Kimble with early touchdown pass to give Belleville a 6-0 lead, but Nutley came back with a strong running game and some line passing by quarterback Leon Kislowski.

"We will graduate a large senior class," said Senesky, referring to the 26 upperclassmen that will say goodbye to BHS in June. "The seniors were a very special group and gave a great deal of themselves. We wanted this year to be a very special one for them because they had played since the eighth grade together and were finishing their high school careers."

A complete rundown of the players appears in this week's edition of Bucs Shots. It was a good season for the Buccaneers despite the late season slump. The team was one of the most consistent in the area before injuries took its toll. Next season, a new group of young men will take the field at BHS and new era of high school football will be upon us.



LEMONTREE CORP.
Wholesale Cash & Carry

- Candy • Cigarettes • Fundraising Candy
- Soda • Snacks • Beverages • Cigars
- Institutional Cooking Supplies

Potato Chips
Bulk 4 lb.
\$5.00

653 Schuyler Ave.
Kearny 901-8891
Open M-F 8-5/Sat. 8-12

Pretzels
Bulk 4 lb.
\$3.75

LMV LEASING, INC.
A XEROX Financial Services Company

is proud to announce the appointment of

James W. Yuppa
as District Sales Manager covering


New Jersey, New York City and Eastern Pennsylvania

LMV has provided autos and trucks of all makes throughout the U.S. for over 30 years

Contact **James W. Yuppa**
LMV LEASING, INC.
11 Race Street • Nutley, NJ 07110
201/884-9191

(offices to be moved to a permanent location in Whippany, NJ in late 1984)

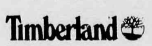
DON'T GET SOAKED



When you're up to your ankles in cold, wet snow, a good pair of waterproof boots is worth every cent you paid. Timberland boots are cut from only the finest materials and waterproof leathers. Every pair is insulated to well below zero. The result is the most rugged, comfortable boot money can buy.

In fact, if you're settling for anything other than Timberland waterproof boots, your feet aren't the only things getting soaked.

Available in a variety of men's and women's styles.



Nutley Shoes
(formerly Thom McAn)
152 Franklin Ave. Nutley, N.J. 07110
667-2602

M and F 9 a.m.-9 p.m. T, W, Th 9 a.m.-8 p.m. Sat. 9 a.m.-6 p.m.

tory. Nutley Pub was paced by Todd McCougall with 18.

Sparked by Cecil Stetson's 20 points, Nu Plas stopped De Lorenzo Construction, 72-46. The losers were guided by Joe Trione and Dan Ward who continued for 27 points.

In Division B action, Corbo Marbach's Caterers exploded by RLM Graphics, 103-66. Led by Vinnie McDonald's 34 points and brothers Lester and Rufus Johnson (combined 44), the winners rolled to an easy victory. Alan Talmadge's 21 and Brian Cook's 18 led RLM.

Football Recruiting Night At Queen of Peace Dec. 12

Queen of Peace High School will host its second annual College Football Recruiting Night Wednesday, Dec. 12, from 6:30-9:30, at the high school at 191 Rutherford Place, North Arlington.

Over 60 college football programs from throughout the northeast have been invited to attend. Colleges from New York, New Jersey, Pennsylvania, Con-

necticut, Maryland, Delaware, Massachusetts and Virginia have already promised to attend.

College-bound juniors and seniors interested in continuing their football careers on the collegiate level are invited to attend the program. College coaches will be on hand to explain their school's academic, athletic and financial aid programs. While aimed at players interested in attending Division II and III schools (non-scholarship institutions), some Division I and IAA schools will be represented.

High school coaches wishing to bring players should contact Dave Clauser at 998-8277, or Ken Healy at 997-4794. Players attending on their own are welcome.

CARPET WAREHOUSE OUTLET
CHARLES ST.
1-3 Charles St., West Orange
(Just off Main St. in the Edison Factory
18 Floor, Yam Factory Bldg.
1 Block from Fabulous Wallcovering
Call 736-7796
MON., WED., & FRI. 8:30 AM - 6 PM
TUES. & THURS. 8:30 AM-8:30 PM-SAT. 8:30 AM-5 PM

"Your Off Price Carpet Store"
WALL TO WALL BROADLOOM
INSTALLED OVER HEAVY PADDING

HEATHER TWEED INDUSTRIAL \$9 ⁹⁹ sq. yd. SPECIAL Completely installed OUTLET PRICE	PLUSH NYLON SAXONY \$11 ⁹⁹ sq. yd. SPECIAL Completely installed OUTLET PRICE	CARVED DUPONT NYLON \$11 ⁹⁹ sq. yd. SPECIAL Completely installed OUTLET PRICE
MULTI-COLORED NYLON SAXONY \$13 ⁹⁹ sq. yd. SPECIAL Completely installed OUTLET PRICE	HEAVY NYLON SAXONY \$15 ⁹⁹ sq. yd. SPECIAL Completely installed OUTLET PRICE	SUPER HEAVY SAXONY TREVIRA \$16 ⁹⁹ sq. yd. SPECIAL Completely installed OUTLET PRICES

\$10 Off

\$15 Off

\$20 Off

\$30 Off

ANY REMnant 100% off
Good thru Dec. 15th

ANY REMnant 100% off
Good thru Dec. 15th

ANY REMnant 100% off
Good thru Dec. 15th

ANY REMnant 100% off
Good thru Dec. 15th

CARMINES PUB & RESTAURANT

118 Franklin Ave.
Nutley, N.J.
661-4333 661-4306

ALL YOU CAN EAT
Mon.- Mussels\$2.00
Tues.- Spaghetti\$2.00
Wed.- Calamari\$3.00
Thurs.- Mussels\$2.00
Fri.- Popcorn Shrimp.....\$3.00
Sat. Special - 1 Doz.
Steamers or Clams
on ½ Shell
Only \$3.75
Businessman Lunch Specials

Dinner Special
Lobster Fra Diabolo
(served with spaghetti)
\$6.75
Daily 11:30-3:00
\$1.95 - \$3.95

Monday
Nite Football
and
Thurs. Ladies
Nite

Open 10 am-2 am - Mon.-Sat. 12 pm-2 am Sundays

Basketball Leagues Now Being Formed

The Belleville Recreation Department is presently forming its 1984-85 Senior Boys Basketball League for male Belleville residents in grades 9-12. The league plays its games Tuesday nights beginning Dec. 11 at 6:30 at the middle school.

Only the first 12 teams to apply will be admitted into the league. High School varsity, Jaycee and freshman players are not eligible to play in this league. To obtain a roster call league director John Pravata at the Rec Office 759-3142 or stop by between 8:30-4:00, Monday-Friday.

The Belleville Rec Department

will once again be offering the Men's Open Gym for Basketball Saturday afternoons, 1-4 p.m. at the Belleville Middle School Boys' gym.

The program will be limited to Belleville residents adult men only, who must preregister for the program by coming to the Rec House office at 407 Joram on St. to apply for a photo identification card which will be required to gain admission to the gym.

The office will also be open Dec. 10 and 21 and 26 from 7-8 p.m. for registration. For more information, call 759-3142 during regular office hours.

Crime Watchers Plates Proposed by Orechio

Legislation providing for special motor vehicle license plates for participating in local crime prevention organizations has been introduced by Senate President Carmen A. Orechio.

The special plates, which will bear the "Crime Watch Program" insignia, can be obtained by applying to the director of the Division of Motor Vehicles and will identify a person as a participant in a local crime prevention program.

"It has been proven that Neighborhood Watch programs significantly reduce the incidence of crime and create a safer environment," Sen. Orechio said. "By identifying individuals as active participants in these local efforts, we will bolster an already established criminal deterrent."

Orechio is a Nutley commissioner and the director of public safety.



Defensive Position — Donna Brooks (left) keeps close eye on the ball during a recent girls' basketball practice at BHS. The girls' basketball team will feature some new faces this year after losing four seniors to graduation.

Library Now Offers New Videocassettes

New video cassette additions to the Belleville Public Library's permanent video collection feature some noted film classics. "The 39 Steps" with Robert Donat and Madeleine Carroll, a 1935 spy thriller, helped establish Alfred Hitchcock as the master of suspense and excitement.

"Of Human Bondage" with Bette Davis and Leslie Howard, set at the turn of the century, shows the tragic passion of a crippled doctor for a lowbrow, cockney waitress, played by Davis, which established the actress in her first great screen role, while "Scarlet Street" with Edward G. Robinson, Joan Bennett, and Dan Duryea, is an engrossing story of a henpecked middle-aged cashier, who becomes infatuated with a sultry young woman whose boyfriend encourages her to seduce him to obtain his money. "Penny Sordide" starring Cary Grant and Irene Dunne, shows how a couple meets, marries, adopts a child, and suffers woes, in a sensitive film. In "Our Town" with William Holden and Martha Scott, Grover's Corner, N.H., is the scene of the Pulitzer prize-winning adaptation, whose story is told through the eyes of the village pharmacist.

Other video additions include "The Little Princess" with Shirley Temple, Cesar Romero, and Arthur Treacher, "The Inspector General" with Danny Kaye, Elsa Lancaster, and Walter Slezak, and "Charlotte's Web."

Library card holders borrow videotapes for a 24-hour period. A \$1 user's fee is payable on each cassette at the time of return; a \$2 fee on Saturday through Monday borrowings. There are overdue charges if tapes are returned after the deadline.

Discount Book Available at Public Library

The Friends of the Belleville Public Library have announced the availability of their fundraising book, Entertainment '85, a family coupon book which enables members to 50 percent discounts on a tremendous range of restaurants, tours and travel. Entertainment '85, which sells for \$25, is available at the library's main branch, 221 Washington Ave., or at the Silver Lake branch, 301 Magnolia St.

For more information, call the library at 759-9200.

Please clip my card for future reference



Robin Hood's Room
Indoor Range • Lessons
Pro Shop • Bow Repair
Custom Arrows • Service

JOHN J. BOTTONE
36 Franklin Ave. • Nutley, N.J. 07110 • (201) 235-0095

BAG'N BAGGAGE TRAVEL, INC.

MICHELE PETROLE
President
1065 Broad Street
Bloomfield, New Jersey 07003

CENTURION
CAPITAL MANAGEMENT CO., INC.
Investment Counsel & Financial Consulting

David J. Olmsted
President
800 Bloomfield Avenue
PO Box 570
Nutley, New Jersey 07110

ROCK OF AGES GRANITE

Bronze and Granite Memorials, Inc.
45 SAMWORTH ROAD - CLIFTON, N.J.
(NEAR ROUTE 3, OFF ALLWOOD ROAD)
(201) - 473-3922

Erwin Wilzig
Manager
Next to King Solomon memorial Park

Kondreck Photographers

577 WASHINGTON AVENUE
BELLEVILLE, N.J. 07109

A.G. Advertising
COUPON BOOK
743-6745

James Street • Bloomfield, N.J.
(across from Foley Field)

STOP IN
OR CALL TODAY!

RANDALL C. KULLY
PUBLISHER

HAYDEN PHILLIPS
EDITOR

FIND OUT HOW BUSINESS PEOPLE CAN WORK TOGETHER

DIRECT MAIL WORKS!



QUALITY ADVERTISING
AT WHOLESALE PRICES!

A Not-For-Profit, Direct Mail
Merchants Co-Op

TRY US WE CARE

CAR CARE AUTO PARTS

COMPLETE FOREIGN & DOMESTIC
PARTS & REPAIR SERVICE

MIKE & DENNIS
867-3962

46-48 FRANKLIN AVE.
NUTLEY, N.J. 07110

"Where Experience
Makes The Difference"

north jersey

TRUCK SEAT CO.
AUTHORIZED UOP BOSTROM - STOCKING DISTRIBUTOR
PARTS, SALES AND SERVICE
COMPLETE SEAT REBUILDING & UPHOLSTERING

BOB E. SCHWEIKERT
22 MOTLER PLACE
BLOOMFIELD, N.J. 07003

201-743-0310
212-517-8092

Agile Messenger Service

ENVELOPE TO TRAILER LOAD

ANGELO SCILLA
VICE PRESIDENT

Woody Perovic

ROYAL REMODELING
Don't Fuss... Call Us!

P.O. Box 9394
Clifton, N.J. 07011

Business (901) 743-3501
Home (901) 472-7152

Anne Truani's
Salon Parle

647 FRANKLIN AVE.
NUTLEY, N.J. 07110
2ND FLOOR

201 661 0202 3

GENERAL INSURANCE

MICHAEL McLAFFERTY
AUTO, HOMEOWNERS, LIFE

443 PROSPECT ST.
NUTLEY, N.J. 07110

(201) 667-8534

TROISE INSURANCE AGENCY
COMPLETE INSURANCE SERVICE

RITA G. TROISE

465 WASHINGTON AVE.
BELLEVILLE, N.J. 07109
(201) 759-4100

(201) 667-1155

PHILIP J. SCRIFIGNANO
ATTORNEY AT LAW

249 FRANKLIN AVE.
NUTLEY, N.J. 07110

ELECTROLYSIS STUDIO
MEDICALLY APPROVED METHOD OF HAIR REMOVAL

CERTIFIED ELECTROLOGISTS
Member of Electrolysis Association

Lucille Albanese
Valerie Albanese

572 Bloomfield Ave.
Bloomfield, N.J. 07003
748-9223

CLOSED SATURDAY AND MONDAY

MEYER'S KIELB'S

MEYER'S BAKERY — CAFE
227 FRANKLIN AVE.
NUTLEY, N.J.
667-6587

KIELB'S QUALITY BAKERY
319 FRANKLIN AVE.
NEWARK, N.J.
482-0585

MEYER'S QUALITY BAKERY
382 WASHINGTON AVE.
BELLEVILLE, N.J.
759-1673

3 LOCATIONS TO SERVE YOU BETTER

380 Main Street
Belleville, New Jersey
751-4600

CAMEO OPTICS

BUY 1 PAIR GET 1 FREE

Hours: Monday and Saturday 10-5
Tues., Thurs., Fri. 10-8 Closed Wednesday

NEW JERSEY 201 - 235-1234
NEW YORK 212 - 237-0988

NUTLEY TRAVEL SERVICE
(DIVISION ORECHIO BOOK AGENCY, INC.)

GARMEN A. ORECHIO

800 BLOOMFIELD AVENUE
NUTLEY, N.J. 07110

Indoor Track Team Starts Season Dec. 15

The Belleville indoor track team has begun practice in preparation for the regular season which begins on Dec. 15.

John Tosato's team will take part in an invitational, either at St. Joseph's High School or East Brunswick. More details will appear in next week's edition.

"We had a very good turnout," Tosato said. "Twenty-six athletes came out for the team. We just finished our first week of practice and will be getting ready for the relay."

The indoor season starts with relay races and switches to individual races in January. For the boys' team, four men return to the lineup that competed last year: Seniors Bob Hutchinson and Bill Huamani, junior J.R. Di Vincenzo and sophomore John Zurlo lead the way.

For the girls' team Joyce Luongo, Donna Lee Daudelin and Laurie Herschel are the top candidates. Seniors Mike Silletti, Dave Schenck and Frank Trupia, junior Larry Boiscano and sophomores Tom Ruzzano and Vince Trupia should also see a lot of action this winter.

"The runners have been working out at the stadium," Tosato said, grateful for the mild weather that has blanketed the east coast in early December. "Our weight men have been lifting twice a week and I'm hoping they can start throwing this week indoors."

Tosato also received some good news from his cross country team. Sophomore Craig Burden was named to the Honorable Mention, all NNJHL for his performance on the cinders this fall. Ditto for Joyce Luongo, a freshman, who did a super job for the girls this year. Speaking of Luongo, she was second in the 10 kilometer race at the Passaic Turkey Trot a few weeks ago. Luongo was running with other girls in her age bracket. Her time was 49:47.

Daudelin was also second in the 10 km in her age group, finishing in a time of 52:34. Both girls should be a big help to the indoor team.

Heard at Ringside

By Steve H. Frank

Emanuel Steward was all excited putting call through boxing writers about the contract for Thomas Hearns and world middleweight champion Marvin Hagler of Brookton, Mass., to battle in April at Caesars Palace in Las Vegas, Nev. When promoter Bob Arum was contacted, he said, "It's definite. The Hagler-Hearns matchup is expected to be the most talked about fight in 1985." Hagler, 30, has a 60-2-2 with 50 KO's record. Hearns, 26, is 40-1 with 34 KO's.

Promoter Don King confirmed he has signed heavyweight Larry Holmes and David Bey to fight in late February or early March. If Bey of Philadelphia is in shape and fights as he did against Greg Page he could snap Holmes' undefeated winning streak.

Mark Medal's manager Eddie Allen informs from his Colonia, N.J. office that the former International Boxing Federation junior middleweight not only lost his title to Puerto Rican Carlos Santos at New York's Felt Forum but he fractured his right thumb. Medal of Jersey City will not be back in the gym until late January.

Middleweight James "Heat" Kinchen of San Diego, Calif., retained his unbeaten record as he demolished Alex Ramos of South Bronx, N.Y., for a KO in the ninth frame for the USA title. The five first rounds were exceptionally dull and Kinchen, 26, fought defensively, depending on the jab. We had Ramos ahead four rounds to one. Near the end of the fifth round Kinchen started to take the fight away from the champion, it was all the Heat's battle until the end as a result of two well-placed left hooks by the Heat. Kinchen raised his record to 34-0-2 as Ramos went to 21-3-2 at Caesars Palace in Stateline, Nev.

NBC-TV and HBO Cable are bidding to purchase the broadcast rights to the Larry Holmes-David Bey heavyweight matchup to be promoted by Don King in February. Tim Witherspoon and James "Bonecrusher" Smith have been booked for a 10-rounder on the same card. Holmes has taken the Bey fight for less money rather than face Michael Spinks for double the purse.

Phil La Motta was voted into Boxing's Hall of Fame by the entire selection committee. A well deserved honor. As an amateur between 1931-33 he scored 43 KO's in 60 bouts while only losing seven. As a professional from 1933-38 his record reads — 40 won and 5 lost. Phil won the New Jersey State championship during his career. He was also a sparring partner for middleweight champion Vince Dundee and welterweight titleholder Young Jack Thompson. Dundee and Thompson used La Motta to improve their speed. La Motta has been owner-operator of a floor waxing company since hanging up the mitts. He relocated from Newark to Clifton 32 years ago. He is now 67.

For many months Eddie Gersh has been battling in and out of court with Jack Solerwitz and Lenny Leeds over the managerial rights to problem-child Howard Davis, lightweight out of Glen Cove, N.Y. They've decided to join together and co-promote a Dec. 14 boxing show at the Nassau Coliseum. The main bout will have Davis fighting Bobby Johnson of Easton, Pa. Junior middleweight Kevin Moley and former middleweight champ Vito Antufelmo. Both are from Long Island.

Alan Kornberg and Steve Nelson are co-managers of heavyweight James "Bonecrusher" Smith of Magnolia, N.C., who considered themselves to be two brainy guys when they maneuvered their warrior (with only 14 fights) into a title match with Larry Holmes of Easton, Pa. Nov. 9. For \$200,000 (Smith's purse before deductions) we don't consider Kornberg-Nelson having too much smarts to have their inexperienced pug square off with a fighter who knows all the tricks-of-the-trade accumulated during his 45 encounters.

World Boxing Council has raised Mike Weaver to number one contender for the heavyweight championship in its latest release of their top 10 ratings. Weaver is followed by David Bey, Tim Witherspoon, Michael Dokes, Trevor Berbick, Greg Page, Jeff Simms, Mitchell Green, James Broad and Gerry Cooney. Weaver originally from Gatesville, Texas, now fighting out of Diamond Bar, Calif., has also become the World Association challenger for champion Pinklon Thomas' title.

Jannarone Family Gathers for Reunion

The Jannarone family of Nutley and Belleville held a reunion Sept. 8 at the Candlewood Swim and Tennis Club, Howell.

The family dates back to 1890 when Phillip Jannarone emigrated to America from Ariano, Italy. Soon after his marriage to Felice Zampanti, Phillip sent for his brother Peter followed by his brothers, Ralph, Michael, and Charles, then sisters Josephine and Marie.

In 1896 Phillip and Peter started the P and P Contracting Company in Belleville. Later, brothers Ralph and Michael joined the firm. In 1920 Phillip formed the Phillip Jannarone and Sons Company with his two older sons, Carmen and Frank. This company paved many streets in Nutley, Belleville, Rutherford, and other North Jersey towns as well as the approach roads to the Holland Tunnel — while the Jannarone Contracting Company, (Peter, Ralph and Michael) paved many roads in Monmouth and Ocean Counties.

Another brother, the Rt. Rev. Msgr. August Jannarone, arrived in 1930. Now deceased, he served in several Catholic parishes in New Jersey and New York.

Phillip and Felice were the parents of 10 children, seven of whom survive. Among the professions represented by members of the family are nursing, engineering, education, and architecture. Representing the educators is son, R. Thomas Jannarone, Sr., who was superintendent of Schools in 14 of 15 years and grandson, R. Thomas Jannarone, Jr., who is presently superintendent of the Asbury Park school district.

As years past, cousins of Phillip (Frank, Pasquale, an Joe) also arrived from Italy and settled in the Nutley/Belleville area.

There are now hundreds of Jannarones scattered throughout the country, engaged in varied professions. Several members attended the service academies, such as Brig. Gen. Rt. John R. Jannarone, son on Charles, who graduated from West Point first in his class. This ranking was second only to Gen. Douglas MacArthur who graduated with the highest standing in West Point history.

Angela Vitello (daughter of Josephine), a registered nurse, served in the Pacific during World War II and attained the rank of captain in the Navy.

The reunion was organized by Phillip and Felice's son and daughter-in-law, Mr. and Mrs. R. Thomas Jannarone, Sr., and members of their immediate family. Other family members at the reunion included A. James Jannarone, presently department chairperson for Social Studies at Manalapan High School, and his wife Dorothy — the owners of the Candlewood Swim and Tennis Club; Marcia Jannarone Colman, a teacher at St. Peter's School, Pleasantville; William Jannarone, a Real Estate broker in Vineland; Alicia Jannarone Price, a teacher in Irvine, Cal.; and Agnes Jannarone Gordon, a teacher in Simi Valley, Cal.



Putting Their Heads Together — Buccaneer running back John Olivieri bangs heads with a Nutley defender during Thanksgiving Day game. Olivieri earned NNJL honors for his fine season.

CATCH THE NEWS!!

abc NEWS HOUR

Channel 36/W

"LIVE AT 5"

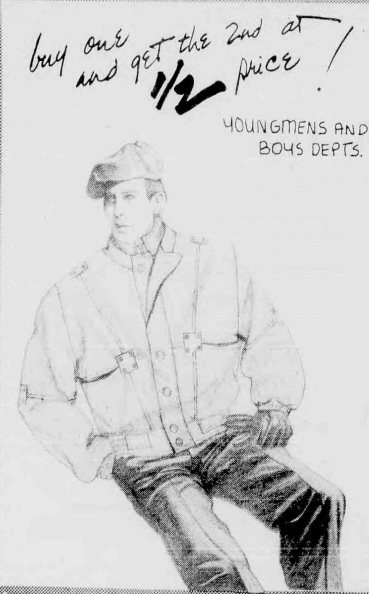
And A Repeat Telecast Continued Every Hour Till 9 p.m. & 7-11 a.m. daily

FEATURING

- Community News Coverage
- Sports
- Local Personalities And More

Only 19 Days Left For Our COUNTDOWN TO CHRISTMAS

Send a postcard with your name, address & phone number to: OBC Countdown to Christmas 800 Bloomfield Ave. Nutley, N.J. 07110



HOLIDAY HRS: DAILY 10-9 SAT 10-5 SUN 11-4 All major and JNC charges - Parking lot in rear

also slims and hunkies for boys

from any 2 of the following items HIGHER PRICE PREVAILS

LEE

Corduroy and denim jeans... also huckies and slims

BUGLE BOY & COTLER zipper and parachute pants - boys 8-20 youngmens 21-38

SERGIO VALENTI & COTLER pinstripe denims

SERGIO VALENTI PACIFIC TRAILS and OUI outerwear boys 8-20 youngmens 21-38

plus many other GREAT VALUES

JNC the men's store nutley center-nutley-664/900

Boys Scouts Are Selling Coupon Book

Boy Scout Troop 301, sponsored by Wesley United Methodist Church, has announced orders for the new 1985 edition of "Entertainment '85" are now being accepted.

To place an order, call Jay at 759-3590.

The Choice of the People



7 Days 24 Hours Delicious Salad Bar! Italian Specialties Steaks & Chops

All baking done on premises • Homemade pastries Children's Menu Available Special Breakfast Menu: 6-11 a.m. Daily Businessman's Lunch: 11 a.m.-3 p.m. Salad Bar Open 11 a.m.-10 p.m. AIA CARTE and COMPLETE DINER MENU

We're Always Open WILLIE'S DINER-RESTAURANT

9 State St., Bloomfield Call 748-7414

Winter "CLEARANCE" PRE-SEASON SALE!!



- Honda quality throughout
- Rugged, dependable Honda 5 HP 4-stroke engine provides greater snow blowing ability
- Honda Automatic Decompression easy start system makes engine starting quick and reliable
- Self propelled for easy maneuverability even through hard packed snow
- Choice of wheel or track drive system
- 220° adjustable discharge chute allows snow throwing in almost any direction
- Adjustable snow deflector throws 3 to 20'

- Honda quality throughout
- Rugged, dependable Honda 3.5 HP 4-stroke engine has plenty of power
- Semi self propelled
- 220° adjustable discharge chute allows snow throwing in almost any direction
- Adjustable snow deflector throws 3 to 20'



IT'S A HONDA The Motorcycle Mall

165 WASHINGTON AVE. BELLEVILLE 751-4545 751-7727

Maintaining Weight and Diet Are Tips for Diabetic Women

(Editor's note: Dr. Bachman is assistant professor of obstetrics/gynecology at the University of Medicine and Dentistry of New Jersey-Rutgers Medical School. She lives in Edison.)

Few diabetic women ever became pregnant prior to the discovery of insulin in 1922. The reasons behind this are unclear even now. What is clear, however, is that diabetic women today are just as fertile as non-diabetics and have no trouble becoming pregnant and delivering a healthy baby as long as they remain in good control.

By "good control" I mean maintaining a healthy balance between insulin replacement, diet, weight and exercise.

Diabetes is characterized by the inadequate production or utilization of insulin due to a malfunction of the pancreas, the organ that produces it. It is not known why a person is diabetic. Researchers theorize that it could be hereditary, environmental or viral factor, but the specific cause is still unclear.

As there are a number of pregnancy complications that can result if a woman's blood sugar level is not kept within normal

bounds, I strongly recommend any diabetic woman planning a pregnancy to be in good control for at least 3-6 months before conception.

After conception, she should consult her obstetrician as soon as she misses her first period. Because of diabetes, more frequent examinations are needed and close monitoring of the mother's glucose level is crucial to the well-being of the pregnancy. Fetal monitoring by sonogram or ultrasound is also recommended to make certain the baby is developing properly.

If a woman's diabetes is not in good control — if her level of blood sugar is too high — the fetus can become oversized. The excessive glucose she is making will cross the placenta and produce an overly large baby, which may require a cesarean section rather than vaginal delivery.

Diabetic mothers do have higher incidence of premature births because although the babies are large, they don't always mature as quickly. These babies can have higher incidence of congenital malformations such as heart defects, but again, this usually occurs only among women in poor control of their diabetes.

It is not uncommon for some previously non-diabetic women to become diabetic during pregnancy — a condition known as gestational diabetes. Pregnancy itself predisposes a woman to have higher glucose levels as nature's way of making sure the fetus will be nourished. After the pregnancy is over, this form of diabetes will often disappear, but if it doesn't it can most often be controlled by diet.

Any woman with a history of long-term diabetes should consider completion of her family as early as possible since the longer she waits the more complications are apt to arise. Kidney and eye problems that tend to develop with age can complicate a pregnancy. Vascular disorders that lead to blood vessels becoming narrower can limit the amount of oxygen delivered to the placenta.

After a family is complete, the couple should consider a permanent contraceptive method such as tubal ligation or vasectomy to insure no unwanted pregnancies and the complications that can ensue.

Many of the myths surrounding diabetes have been proven wrong in recent years, and mothers and babies do well as long as precautions are taken and the mother receives good medical care. Most of the problems women have experienced have stemmed from their diabetes being under poor control.

With good medical care and a determined effort on the part of the diabetic woman, a successful and uncomplicated pregnancy can be the outcome.

Aides Can Ride N.J. Transit Free of Charge

Persons who accompany handicapped people as aides can ride free on N.J. Transit buses and trains under a new policy that became effective Dec. 1 according to the Statewide transportation corporation.

Under the existing guide policy, only aides traveling with a visually-impaired person can ride N.J. Transit buses and trains free at any time.

Eligibility under the new guide policy calls for certification by a physician of the handicapped rider, which would be submitted to N.J. Transit along with the regular reduced fare application. The handicapped rider's reduced fare identification card would be appropriately validated to permit free fare for an aide.

Reduced fare applications may be obtained by writing Reduced Fare Program, N.J. Transit Bus Operations, 180 Bowden Ave., Maplewood, N.J., 07040 or by calling 761-8327.

NLT Opens 'Barefoot' Tomorrow

Nutley Little Theatre will open its production of Neil Simon's "Barefoot in the Park" tomorrow, 8 p.m., in the NLT Barn, 47 Erie Place.

The production will continue this Saturday and Sunday, followed by performances Dec. 13, 14 and 15. Curtain time except for this Sunday is a 3 p.m. matinee.

Vicky Chalk Little of Montclair is the director of the Simon comedy, which tells the experiences of a young married couple living in Greenwich Village. Sue Little of Nutley is the stage manager. Jay Montgomery of Little Falls is the production manager and the set designer is Tom Cort of Bloomfield.

Tickets are \$5 and reservations can be made by calling 667-0374. Theatre patrons are requested to park on Brookfield Avenue.

Winner Chosen In Timberland Sweepstakes

Atlantic Uniform, 444 Washington Ave., awarded Steve Caposiena of Newark with a Black and Decker circular saw for being chosen the first winner of its Timberland Sweepstakes Contest. The contest continues until Jan. 15. Entry blanks are available in the store with no purchase necessary.

Atlantic Uniform carries Timberland boots in a complete size range.

Crime Prevention Legislation Awaits Final House Approval

Legislation sponsored by Senate President Carmen Orchio that would create a crime prevention coordinating council in the Department of Law and Public Safety has been returned for consideration of Gov. Tom Kean's recommendations after passage in both the Senate and Assembly. It now awaits final passage in both houses once again before becoming law.

The crime prevention council will serve as an advisory committee to the police training commission and will be empowered to recommend courses of study and standards for training programs in crime prevention.

The bill also establishes a crime prevention resource center that will provide material, information and technical assistance throughout the state in the area of crime prevention, recommend standards for statewide crime

prevention programs in municipal police departments in ways of obtaining and utilizing federal, state and local financial support and grants for crime prevention programs in the municipality.

"The formation of this council will lead to a coordinated program to strengthen the crime prevention movement in our state," Sen. Orchio said. "This council will not only draw on the expertise of law enforcement officials, it will also include education and industrial community which is essential for a truly effective statewide crime prevention effort."

As director of public safety in Nutley, it has been proved to me first hand that crime prevention programs such as Neighborhood Watch, contribute significantly to a safer environment," Orchio stated.



Billions and Billions Served — Rose Paduane (left), Dominick May, supervisor of McDonald's in Belleville, and Dane Bergin, manager, stand in front of McDonald's new sign which was changed when the restaurant chain sold its 50 billionth hamburger in New York City last week. McDonald's has 8,000 restaurants in 34 countries serving 140 hamburgers per second.

Donahue's Artwork Displayed At Library During December

On exhibit at the Belleville Public Library during the month of December are the works of Joan Donahue of Franklin Lakes. She began studying art when her children were growing up, by enrolling in an adult education course in San Francisco. However, because of the difficulty of obtaining a babysitter for her

five children, she had to give up her interest in art during her children's formative years.

Donahue moved to New Jersey about 20 years ago, her children grew up, married, and she was left with a great deal of time on her own. She then enrolled in literature and poetry classes at Ramapo College. At the Urban Farms Art Show, she met Wayne artist Nina Lavin, from whom she has taken lessons for over four years. Although she has painted mostly in oils, this year she has been studying watercolors with

Lavin and is also attending a watercolor class with Barbara Nehsis at the Parsons School of Design.

"Personally I find I get a deeper satisfaction with the colors I achieve when working with oils. I feel an intensity and depth I do not feel with watercolors," she said. "However, watercolors are faster and it is possible to achieve a spontaneity in my painting that is not possible in oils. Going from one medium to the other has kept my enthusiasm at its peak and has maintained and even increased my interest in painting."

Many of the artist's paintings are in her home in Ponte Vedra Beach, Fla., or in the homes of friends and relatives. Giving something of herself to those she loves has been one of her joys of painting. "Art is a warm and wonderful way to share a part of yourself," she said.

Because she has had several opportunities to travel to foreign countries with her husband Martin, an executive with an international oil company, Donahue has had the opportunity of visiting numerous art museums in many countries and of viewing the masters of art.

Joan Donahue's paintings can be viewed at the main library, 221 Washington Ave. during regular hours.

PARK MANOR NURSING HOME

Dedicated to Better Patient Care
Specializing in Female Patients
PROFESSIONAL NURSING STAFF
REHABILITATION PROGRAM
PHYSICAL THERAPY
OXYGEN FRACTURE EQUIPMENT
SPECIAL DIETS

- AGED
 - CONVALESCENT
 - CHRONICALLY ILL
 - POST-OPERATIVE
- 23 Park Place, Bloomfield
743-7772
Member of NJ American Nursing Home Assoc.
Professional Care in a Homelike Environment

DENTALLY SPEAKING

By Drs. James D. Muglia and Paul N. De Maio

Q: Kevin from Nutley asks: How long does it take to become a dentist?
A: Dear Kevin: In order to become a general practice dentist it takes a minimum of 8 years schooling. After high school, you must attend 4 years of regular college emphasizing your studies in the science area. There are certain courses required that must be fulfilled before you can apply to dental school.

After being accepted, there's a minimum of 4 years basic dental education after which it is recommended that you take a 1 year general practice residency.

If you wish to specialize in a particular field there an additional education is required of 1-3 years.

Dentally Speaking
671 Franklin Avenue
Nutley, N.J. 07110

Trivia Fans

I BET YOU DIDN'T KNOW

Brought to you by Bigelow Motors Chrysler Plymouth

Henry Allen

- Questions:**
1. What is the when you die called?
 2. What continent is Sierra Leone in?
 3. What did Walt Disney turn Tommy Kirk into in 1959?
 4. What percentage of the population has an IQ above 100?
 5. What caused 20 million deaths in 1918?
 6. What Billie Holiday machine appeared in the movie Tommy?
 7. What word occurs 46,227 times in the Bible?
 8. What's missing from a woman suffering from amnesia?

I bet you didn't know... that this is the time to use our new car at Bigelow Motors. We also have a good selection of used cars. Come in and see for yourself.

- Answers:**
1. Death
 2. Africa
 3. A pirate
 4. 2%
 5. The Spanish Flu
 6. The piano
 7. Love
 8. The mind

Bigelow Motors
Chrysler Plymouth
50 Washington Ave.
Belleville 759-4220

Featuring Spacious SOLAR ROOM

Immediate Occupancy!

STARTING AT \$75,000

Low Monthly Maintenance Fee Starting at \$49.88
All below items included in price.

- 5 Acres Recreation Park-Like Setting
- Club House approx. 4,000 sq. ft.
- Health Club
- Saunas, Hot Tubs
- Tennis Courts, platform and regular
- Large size pool
- Spacious insulated solar room
- Central A/C Heating
- Full Basements
- Side by Side Refrigerator/Freezer
- Dishwasher, Washer, Dryer
- Conventional Microwave Oven
- Wet to Wall Carpeting
- Nature Walks & Gazebo

Models open for inspection 10 to 8

Rolling Hills of Andover

222 McPeak Road, Andover Office 383-0874
DIRECTIONS: Rt. 10 West to Exit 25, Proceed to 208 North 7 miles to Limestone Road Turn approximately 4 miles to models. Adjacent to Andover Nursing Home

Low Down Payment Long Term Financing Available

the best of both worlds
holiday shopping weekdays 10-9 sat 10-3:30 sun 11-4

JNC the men's store
467-9200

parking rear of both stores
FREE gift wrap
FREE shipping anywhere in USA

467-9200
Janette Nutley Center
nutley center-nutley

Buying is Cheaper Than Renting

BELLEVILLE OIL CO.

Quality Serviceman Available
Full Line of Heating Equipment
Commercial & Residential

90¢ per gallon 250 gallon min.
C.O.D.
Open 7 Days A Week
Discount to All Senior Citizens

FREDERICK'S INN
BLOOMFIELD'S
OLDEST SPORTS BAR
GOES PIZZAI!

Monday Night Football Special
Bar Pie Plus Jug of Beer \$6.00

Business Men's Luncheon
Monday-Friday
11 a.m. to 2 p.m.
Open 7 Days A Week

Party Room Available 20 to 50

\$1.00 Off
Regular Large Pie
Pick Up or Eat In

Phone
748-4405 or 748-3440
586 Arlington Ave.
Bloomfield, N.J.

CLASSIFIED ADS sure to get results

In The Nutley Sun, Belleville Times and Bloomfield Life

667-3000

DEADLINE TUES. 12 NOON

ANNOUNCEMENTS

ANNOUNCEMENTS

AUTO SERVICE

MARY'S THEATER PARTIES

FOR GROUPS & INDIVIDUALS

Dec. 14: "Pegassi" Meadowslands
 Dec. 28: "La Cage Aux Folles"
 Dec. 30: "Peter Allen" Resorts AC
 Jan. 13: "Atlantic City Trip"
 Jan. 20: "Lilly Langtry's Vio"
 Jan. 27: "The Capades"
 Jan. 29: "La Cage Aux Folles"
 April 11: "Liberty-Radio City"

base include orchestra seat dinner, drink, tax & tip to driver
 10 PASSENGER LUXURY COACHES TO ATLANTIC CITY

998-1268

CLEAN FILL WANT

PLEASE CALL WEEK DAYS
 BETWEEN 9AM & 3PM
 667-0905

MOTORCYCLES

1982 TEST MOPED
 (Bought from Belleville Hon-
 day)

488 orig. mil. 1 owner.
 No accidents. \$300.
 759-5561 or
 751-3921 after 6 p.m.

CAMPER & TRUCKS

1976 FORD COURIER PICK
 UP. NO VALVE &
 RINGS RECENTLY DONE
 NEW TIRE. BRAKES
 RUNS VERY WELL. \$900.
 Call 667-7314.

AUTO WRECKERS

1976 FORD COURIER PICK
 UP. NO VALVE &
 RINGS RECENTLY DONE
 NEW TIRE. BRAKES
 RUNS VERY WELL. \$900.
 Call 667-7314.

SEWING WILL DO

HEMMING
 MINOR
 ALTERATIONS
 & MISC SEWING
 CALL 235-0947

BELLEVILLE

YELLOW CAB
 OUT OF TOWN TAXI
 SERVICE - ANYWHERE
 DEPENDABLE SERVICE
 759-2000

CLOWN, MAGIC & BALLOON

SCULPTURES BY
 ADRIAN ANGLO
 CHILDREN'S PARTIES A
 SPECIALTY. 935-2855

LIMOUSINES

By JOE BERARDINELLI
 STRETCH LIMOUSINES
 FOR ATLANTIC CITY
 & OTHER OCCASIONS
 338-7622

10% discount with coupon

"VOICEZ"

MUSIC FOR
 ALL OCCASIONS.
 ASK FOR DON
 667-0737 or 235-1129

NOVENA TO ST. JUDE

This novena has never
 been known to fail. This
 novena must be said for 9
 consecutive days. Publication
 must be promised.
 O Holy St. Jude, Apostle and
 Martyr, great in virtue and
 in kindness, near
 kinman of Jesus Christ,
 faithful intercessor of all who
 invoke your special
 patronage in time of need,
 to you I now recourse from
 the depth of my heart and
 humbly beg to whom God
 has given great power to
 come to my assistance. Help
 me in my present urgent
 petition. In return, I promise
 to make your name known and
 call you to be invoked. St.
 Jude, pray for us all who in-
 voke your aid.
 Amen
 Say 3 Our Father's, 3 Hail
 Mary's and 3 Gloria's A.J.T.]

AUTOMOTIVE

1977 OLDSMOBILE
 REGENCY 98
 4 DOOR, V-6 WITH RED
 INTERIOR, V-6 PLUS ALL
 AVAILABLE OPTIONS, INCL.
 ALARM, IMMACULATE
 WELL CARED FOR, EXCEL-
 LENT CONDITION.
 MAINTENANCE & REPAIR
 RECORD AVAILABLE.
 ORIGINAL OWNER. \$3800.
 759-9048 Days
 265-3878 NIGHTS

1978 FLY VOLARE

6 cyl. 4 dr. Auto, P.B., A/C,
 new rear end, brake,
 battery, starter & in-line A-1
 cond. \$1895.
 Call 751-3882

FORD VAN 100

6 CYL. MINUT TRANS,
 NEW CLUTCH, BODY &
 ENGINE IN EXCELLENT
 COND. PARTIALLY
 CUSTOMIZED, 67,000
 MILES. ASKING \$2700.
 991-7761

1972 FORD LTD

BEST SELL
 MUST OFFER
 CALL DOW
 429-2199

1978 GRANADA

Excellent cond. 4 door. Auto.
 Trans. Air, P.B., AM/FM
 tape. MUST BE SEEN.
 Call 751-1889

1976 PONTIAC VENTURA

4 DOOR, LOW MILEAGE
 \$1400. Call 667-7314.

FREE TOWING & ROAD TESTS

Kirk's
 AUTOMATIC
 TRANSMISSIONS
 INC.

STANDARD & AUTOMATIC
 4 WHEEL DRIVE TRUCKS & CARS

FREE
 ESTIMATES
 998-9666

(Across from North Arlington Diner)
 20 RIVER ROAD, NORTH ARLINGTON

AUTO INSURANCE

THOMAS DELANEY
 Delson Associates
 AUTO INSURANCE CENTER
 CHECK OUR RATES

Immediate Coverage Minimum Down Payment

Mon-Friday 10 am-5 pm 7 pm-8:30 pm
 Saturday 10 am-3 pm

138 BLOOMFIELD AVE. BLOOMFIELD

JIM LUONGO & SON

CONSTRUCTION
 • Alum. Siding
 • New Bathrooms
 • Modern Kitchens
 • Additions
 • Dormers
 • Basement Remodeling
 Free Estimates 661-3210

For Additions, Alterations Or Repairs

SCIRCA CONSTRUCTION

General Contractor
 No Job Too Small
 Fully Insured
 Free Estimate
 Finished Basements
 Kitchens, Bathrooms, etc.
 Call "GINO" 661-2547

For Free Estimates 483-2793

Jerry Capone

General Contractor
 Specializing
 KITCHENS
 BATHROOMS
 EXTENSIONS

• PLUMBING • ROOFING
 • PAINTING • SIDERING
 • CEILING • ATTICS
 We sell and do our own work
 No middleman 221

JOHN RICCI

• ROOFING
 • SIDING
 • ADDITIONS
 • DORMERS
 • REMODELING
 Call 759-3210
 FULLY INSURED

Roofing, siding, gutters,
 leaders, carpentry, aluminum
 replacement windows, fire and
 storm damage and also com-
 plete jobs. Belleville, N.J.
 217. Nutley, N.J. 4085
 Fully insured. Call Gerry
 between 9AM & 9PM
 484-7000

TONY NICOSIA & SONS

Complete Renovation
 NEW ADDITIONS!
 1 to 20 ft. Conversion
 SPECIALISTS IN
 CUSTOM STOCK KITCHENS
 Replacement Windows
 751-7171 or 759-8784

HARRY ELBERSON 857-1474

H & E Elbersen
 Electrical Inc.
 Residential Commercial &
 Industrial

REhab

CARPENTRY SERVICE
 ALTERATIONS-EXTENSIONS
 MASONRY-HANDYMAN WORK
 FHA APPROVED

WORK GUARANTEED
 We Would Beat Any
 Legitimate Estimate
 TONY MISALE
 933-1970 After 5 p.m.
 GARY'S SERVICE
 COMMUNICATION
 CO.

Installation on burglar alarm,
 fire, intercom & piping
 systems for home & business.
 Call for free estimate. We'll
 beat the competition's price.
 759-2170

VALERA ELECTRIC

LICENSE #7050
 COMMERCIAL
 RESIDENTIAL
 INDUSTRIAL
 24 HOUR EMERGENCY
 Call 279-4070

DRESSER CONTRACTING

PAINTING-PAPERHANGING-
 CARPENTRY-DRY WALL
 FULLY INSURED
 991-2236 or 991-2293

REPAIR SERVICES

ON ALL WASHERS, DRYERS
 & DISHWASHERS
 SPECIALIZING IN GE AP-
 PLIANCES AND COIN
 OPERATED MACHINES.
 CALL L & M WASHERS
 667-1555 667-1150

HANDYMAN

• PAINTING
 • CLEANING GUTTERS
 • SEAL DRIVEWAYS

MISC. SERVICES

FRANK'S
 CLEANUP SERVICE
 Basement
 House
 Garage Rubbish Removal
 Light Hauling
 Full cleanup & removal
 991-2336 or 991-2293

REPAIR SERVICES

ON ALL WASHERS, DRYERS
 & DISHWASHERS
 SPECIALIZING IN GE AP-
 PLIANCES AND COIN
 OPERATED MACHINES.
 CALL L & M WASHERS
 667-1555 667-1150

HANDYMAN

• PAINTING
 • CLEANING GUTTERS
 • SEAL DRIVEWAYS

MISC. SERVICES

FRANK'S
 CLEANUP SERVICE
 Basement
 House
 Garage Rubbish Removal
 Light Hauling
 Full cleanup & removal
 991-2336 or 991-2293

REPAIR SERVICES

ON ALL WASHERS, DRYERS
 & DISHWASHERS
 SPECIALIZING IN GE AP-
 PLIANCES AND COIN
 OPERATED MACHINES.
 CALL L & M WASHERS
 667-1555 667-1150

HANDYMAN

• PAINTING
 • CLEANING GUTTERS
 • SEAL DRIVEWAYS

MISC. SERVICES

FRANK'S
 CLEANUP SERVICE
 Basement
 House
 Garage Rubbish Removal
 Light Hauling
 Full cleanup & removal
 991-2336 or 991-2293

REPAIR SERVICES

ON ALL WASHERS, DRYERS
 & DISHWASHERS
 SPECIALIZING IN GE AP-
 PLIANCES AND COIN
 OPERATED MACHINES.
 CALL L & M WASHERS
 667-1555 667-1150

HANDYMAN

• PAINTING
 • CLEANING GUTTERS
 • SEAL DRIVEWAYS

MISC. SERVICES

FRANK'S
 CLEANUP SERVICE
 Basement
 House
 Garage Rubbish Removal
 Light Hauling
 Full cleanup & removal
 991-2336 or 991-2293

REPAIR SERVICES

ON ALL WASHERS, DRYERS
 & DISHWASHERS
 SPECIALIZING IN GE AP-
 PLIANCES AND COIN
 OPERATED MACHINES.
 CALL L & M WASHERS
 667-1555 667-1150

HANDYMAN

• PAINTING
 • CLEANING GUTTERS
 • SEAL DRIVEWAYS

MISC. SERVICES

FRANK'S
 CLEANUP SERVICE
 Basement
 House
 Garage Rubbish Removal
 Light Hauling
 Full cleanup & removal
 991-2336 or 991-2293

REPAIR SERVICES

ON ALL WASHERS, DRYERS
 & DISHWASHERS
 SPECIALIZING IN GE AP-
 PLIANCES AND COIN
 OPERATED MACHINES.
 CALL L & M WASHERS
 667-1555 667-1150

HANDYMAN

• PAINTING
 • CLEANING GUTTERS
 • SEAL DRIVEWAYS

MISC. SERVICES

FRANK'S
 CLEANUP SERVICE
 Basement
 House
 Garage Rubbish Removal
 Light Hauling
 Full cleanup & removal
 991-2336 or 991-2293

REPAIR SERVICES

ON ALL WASHERS, DRYERS
 & DISHWASHERS
 SPECIALIZING IN GE AP-
 PLIANCES AND COIN
 OPERATED MACHINES.
 CALL L & M WASHERS
 667-1555 667-1150

HANDYMAN

• PAINTING
 • CLEANING GUTTERS
 • SEAL DRIVEWAYS

MISC. SERVICES

FRANK'S
 CLEANUP SERVICE
 Basement
 House
 Garage Rubbish Removal
 Light Hauling
 Full cleanup & removal
 991-2336 or 991-2293

REPAIR SERVICES

ON ALL WASHERS, DRYERS
 & DISHWASHERS
 SPECIALIZING IN GE AP-
 PLIANCES AND COIN
 OPERATED MACHINES.
 CALL L & M WASHERS
 667-1555 667-1150

HANDYMAN

• PAINTING
 • CLEANING GUTTERS
 • SEAL DRIVEWAYS

MISC. SERVICES

FRANK'S
 CLEANUP SERVICE
 Basement
 House
 Garage Rubbish Removal
 Light Hauling
 Full cleanup & removal
 991-2336 or 991-2293

REPAIR SERVICES

ON ALL WASHERS, DRYERS
 & DISHWASHERS
 SPECIALIZING IN GE AP-
 PLIANCES AND COIN
 OPERATED MACHINES.
 CALL L & M WASHERS
 667-1555 667-1150

HANDYMAN

• PAINTING
 • CLEANING GUTTERS
 • SEAL DRIVEWAYS

Call Home Improvements By

ARNOLD LODATO
 General Contractor
 ROOFING & SIDING

• Attics & Basements Finished
 • Dormers
 • Bathrooms
 • Kitchens
 • Storm Windows & Doors
 • Replacement Windows

661-4830 Nutley, N.J.
 Free Estimates Reasonable Prices
 For Additions, Alterations Or Repairs

JIM LUONGO & SON

CONSTRUCTION
 • Alum. Siding
 • New Bathrooms
 • Modern Kitchens
 • Additions
 • Dormers
 • Basement Remodeling
 Free Estimates 661-3210

For Additions, Alterations Or Repairs

SCIRCA CONSTRUCTION

General Contractor
 No Job Too Small
 Fully Insured
 Free Estimate
 Finished Basements
 Kitchens, Bathrooms, etc.
 Call "GINO" 661-2547

For Free Estimates 483-2793

Jerry Capone

General Contractor
 Specializing
 KITCHENS
 BATHROOMS
 EXTENSIONS

• PLUMBING • ROOFING
 • PAINTING • SIDERING
 • CEILING • ATTICS
 We sell and do our own work
 No middleman 221

JOHN RICCI

• ROOFING
 • SIDING
 • ADDITIONS
 • DORMERS
 • REMODELING
 Call 759-3210
 FULLY INSURED

Roofing, siding, gutters,
 leaders, carpentry, aluminum
 replacement windows, fire and
 storm damage and also com-
 plete jobs. Belleville, N.J.
 217. Nutley, N.J. 4085
 Fully insured. Call Gerry
 between 9AM & 9PM
 484-7000

TONY NICOSIA & SONS

Complete Renovation
 NEW ADDITIONS!
 1 to 20 ft. Conversion
 SPECIALISTS IN
 CUSTOM STOCK KITCHENS
 Replacement Windows
 751-7171 or 759-8784

HARRY ELBERSON 857-1474

H & E Elbersen

Electrical Inc.
 Residential Commercial &
 Industrial

REhab

CARPENTRY SERVICE
 ALTERATIONS-EXTENSIONS
 MASONRY-HANDYMAN WORK
 FHA APPROVED

WORK GUARANTEED
 We Would Beat Any
 Legitimate Estimate
 TONY MISALE
 933-1970 After 5 p.m.
 GARY'S SERVICE
 COMMUNICATION
 CO.

Installation on burglar alarm,
 fire, intercom & piping
 systems for home & business.
 Call for free estimate. We'll
 beat the competition's price.
 759-2170

VALERA ELECTRIC

LICENSE #7050
 COMMERCIAL
 RESIDENTIAL
 INDUSTRIAL
 24 HOUR EMERGENCY
 Call 279-4070

DRESSER CONTRACTING

PAINTING-PAPERHANGING-
 CARPENTRY-DRY WALL
 FULLY INSURED
 991-2236 or 991-2293

REPAIR SERVICES

ON ALL WASHERS, DRYERS
 & DISHWASHERS
 SPECIALIZING IN GE AP-
 PLIANCES AND COIN
 OPERATED MACHINES.
 CALL L & M WASHERS
 667-1555 667-1150

HANDYMAN

• PAINTING
 • CLEANING GUTTERS
 • SEAL DRIVEWAYS

MISC. SERVICES

FRANK'S
 CLEANUP SERVICE
 Basement
 House
 Garage Rubbish Removal
 Light Hauling
 Full cleanup & removal
 991-2336 or 991-2293

REPAIR SERVICES

ON ALL WASHERS, DRYERS
 & DISHWASHERS
 SPECIALIZING IN GE AP-
 PLIANCES AND COIN
 OPERATED MACHINES.
 CALL L & M WASHERS
 667-1555 667-1150

HANDYMAN

• PAINTING
 • CLEANING GUTTERS
 • SEAL DRIVEWAYS

MISC. SERVICES

FRANK'S
 CLEANUP SERVICE
 Basement
 House
 Garage Rubbish Removal
 Light Hauling
 Full cleanup & removal
 991-2336 or 991-2293

REPAIR SERVICES

ON ALL WASHERS, DRYERS
 & DISHWASHERS
 SPECIALIZING IN GE AP-
 PLIANCES AND COIN
 OPERATED MACHINES.
 CALL L & M WASHERS
 667-1555 667-1150

HANDYMAN

• PAINTING
 • CLEANING GUTTERS
 • SEAL DRIVEWAYS

MISC. SERVICES

FRANK'S
 CLEANUP SERVICE
 Basement
 House
 Garage Rubbish Removal
 Light Hauling
 Full cleanup & removal
 991-2336 or 991-2293

REPAIR SERVICES

ON ALL WASHERS, DRYERS
 & DISHWASHERS
 SPECIALIZING IN GE AP-
 PLIANCES AND COIN
 OPERATED MACHINES.
 CALL L & M WASHERS
 667-1555 667-1150

HANDYMAN

• PAINTING
 • CLEANING GUTTERS
 • SEAL DRIVEWAYS

MISC. SERVICES

FRANK'S
 CLEANUP SERVICE
 Basement
 House
 Garage Rubbish Removal
 Light Hauling
 Full cleanup & removal
 991-2336 or 991-2293

REPAIR SERVICES

ON ALL WASHERS, DRYERS
 & DISHWASHERS
 SPECIALIZING IN GE AP-
 PLIANCES AND COIN
 OPERATED MACHINES.
 CALL L & M WASHERS
 667-1555 667-1150

HANDYMAN

HELP WANTED

HELP WANTED

HELP WANTED

TRADE YOUR JOB FOR A CAREER.

A job pays up to... about the limits of a job.
But a career with ERA Real Estate has no financial limits.

If you like to work with all types of people, and work hard, ERA can offer you the professional satisfaction and income levels of a successful career in real estate.

ERA has the organizational muscle to help you succeed in today's dynamic real estate market. We have the most comprehensive training program and the most asked-for consumer services in the industry. Making it easier to list and market homes. And ERA backs you up with the national resources

and sales tools you need to succeed.
So if you're a self-starter, trade up from your job, and call ERA Real Estate about a career.



ERA REAL ESTATE
ERA PATRICIAN ASSOCIATES
284-0400

Each office independently owned and operated.

COMMERCIAL CREDIT FINANCIAL NETWORK
Arranged exclusively by ERA

© 1984 Electronic Realty Associates, Inc.

249 Franklin Avenue, Nutley

EXPERIENCED BANK TELLERS

WORK PEAK-TIME ONLY
EARN PREMIUM PAY

Work part time (12 hrs), minimum pay weekly and earn almost as much as you would on a full time schedule!

First Jersey National Bank really values your skills and experience. If you can provide fast, friendly, and efficient service to one of our close-to-home offices, fill out our convenient card, and we'll be in touch with you soon!

Name _____
Address _____
City _____ State _____ Zip _____
Telephone _____
Most recent teller experience: _____
From () To ()
APPLY IN PERSON
429-0100
9-5, M-F

MAIL TO: Personnel Dept.

FIRST JERSEY
SINCE 1864 NATIONAL BANK

One Exchange Place
Jersey City, N.J. 07302
Equal Opportunity Employer M/F

LIGHT FACTORY WORK

IN NAMEPLATE COMPANY.
UNILAP CORP.

681 MAIN STREET
BELLEVILLE, N.J.

759-6017

IF YOU ARE LOOKING
FOR (PERM. OR TEMP.)

CALL
ALL PHASE
EMPLOYMENT
SERVICE

387 FRANKLIN AVE
NUTLEY, N.J.

WE COVER TECH-EXEC
CLERICAL-EXECUTIVE
UNSKILLED & MANY MORE

SECRETARY
Experienced in price quoting,
typing, filing, phone orders,
good telephone manner.
Must be dependable, logical,
neat, hardworking, detail oriented.

CALL 9AM-2PM
424-7286
Ask for Nick Corpora

ADMINISTRATIVE
ASSISTANT
Assist director of buy and
sell department. Must be
organized & reliable. Ability
to follow thru on independent
projects. Good office skills
needed. Typing required.
Must be able to handle
several diversified projects
at once. Hours 9:30 AM
until 1:00 PM. Salary range
\$12,000-\$13,800. Send
resume to: CATHOLIC Community
SERVICES

OFFICE OF PLANNING
17 Mulberry Street
Newark, N.J. 07102

SECY'S \$15.5
lg. cap. headquaters hold
openings w/ spec. g. sec.
typ. facility w/ numbers. We
train on computers. Fpd
Call Kathy Phillips at 743
1614.

NATIONAL PERSONNEL
249 Bloomfield Ave
Bloomfield

WANTED:
WOMEN TO EARN \$100+
week. No need to be trained as
SALON CARE & COLOR CON-
SULTANTS. NO EX-
PERIENCE NECESSARY.
PART-TIME FULL-TIME
CALL FOR INTERVIEW
284-0652

TEACHER'S ASST.
For preschool in Bloomfield.
1:30 a.m. to 5:30 p.m.
Ftg. intelligent, reliable,
outgoing personality a neces-
sity. College also.
Call 429-0870
between 8 A.M.-5 P.M.

TELEPHONE
SOLUTIONS
TO WORK IN SOUTH
JERSEY OFFICE. Flexible
TRAIN. FLEXIBLE HOURS.
CALL: 465-1400
ASK FOR PAULIA FINE

DATA ENTRY OPERATOR

Must be fully experienced in
word processing and multi-
tasking. Resume required. Call
Ms. Victoria at 484-6401.
Only qualified applicant
need apply.

PART TIME JOBS
AT GIANTS STADIUM
Immediate openings
now available:

* CASHIERS
* COUNTER WORKERS
* VENDORS
* WAITRESSES
* WAITERS
* BUSBOYS/g

Apply in person,
Monday thru Friday,
from 10AM-4PM,
or on Wednesday from
3 PM-7 PM, to the
Harry M. Stevens office
located between
Gates B & C
at Giants Stadium

LEGAL SECRETARY
FOR CONGRESSIONAL
TOWNSHIP NEWARK LAW FIRM.
HOURS 9AM-5PM. 75-150
W.P.W. HEAVY DUTY
TYPING & STENO. VARIOUS
DIVERSIFIED. CALL 9AM-
5PM.

642-5008

BOOKKEEPER
PART TIME
FULL CHARGE 8 HOURS
PER WEEK. DURING NOB-
MAL OFFICE HOURS. \$10
PER HOUR. REFERENCES RE-
QUIRED. CALL JAY FOR
INTERVIEW.

667-3600

RESUMES
CALL TONY RACCIATTI
667-4773

COMPASS ASSOCIATES
CAREER COUNSELING
RESUME PREPARATION
CALL 429-7147
MONDAY THRU
SATURDAY
6 P.M.-9 P.M.

DRUM & PERCUSSION
LESSONS
GRADUATE & FORMER
INSTRUCTOR AT BERKLEE
COLLEGE OF MUSIC,
BOSTON CONSERVATORY &
BOSTON PERCUSSION
ACADEMY IS OFFERING LES-
SONS IN THE AREA FREE
CONSULTATION.

CALL TONY RACCIATTI
667-4773

COMPUTER LESSONS
FOR PRESCHOOL IN
Bloomfield.
1:30 a.m. to 5:30 p.m.
Ftg. intelligent, reliable,
outgoing personality a neces-
sity. College also.
Call 429-0870
between 8 A.M.-5 P.M.

TELEPHONE
SOLUTIONS
TO WORK IN SOUTH
JERSEY OFFICE. Flexible
TRAIN. FLEXIBLE HOURS.
CALL: 465-1400
ASK FOR PAULIA FINE

INSTRUCTIONS

TUTOR - READING
GRADES K-6. BY CER-
TIFIED EXPERIENCED
ELEMENTARY TEACHER.
REASONABLE RATES.
CALL 661-4009.

PIANO LESSONS
IN YOUR HOME
ALL STYLES-ALL LEVELS
BEGINNERS TO ADVANCED
CALL STEVE
667-2196

CAKE DECORATING
Classes made easy by
Master Cake Decorator
with the W. Edgar
MICHAEL THE MASTER
CAKE MAGician
SCHOOL OF
CAKE DECORATING
667-3341 OR 667-2788

NEED A
MATH TUTOR?
CALL 751-5150
ANYTIME

MATH TUTORING
EXPERIENCED TEACHER
WILL TUTOR MATH.
GRADES 5 THRU 12. Will also
tutor.

BASIC
COMPUTER LANGUAGE
CALL 338-0996

VOICE LESSONS
Voice teacher at NYC
university is accepting
new students.
Reasonable rates.
667-3572

PROFESSIONAL
KARATE INSTRUCTION
GROUP OR
PRIVATE LESSONS
AVAILABLE. 5 TH
DEGREE BLACK BELT.
338-3172

HEALTH CARE
\$55 FOR CHRISTMAS.
Need some extra cash for
* PRESENTS
* BILLS
* VACATION
OR JUST FOR YOU
Set your own hours, work as
much or as little as you like.
If you are or you know cer-
tified home health aides,
homemakers, companions
for choice locations in the
Suburban Essex County,
please contact us immediately.
We can assign almost im-
mediately. Live-in care is
available. I desired.
DON'T HESITATE. MYWATK
CALL NOW

HOLMES
SECURITY CORP.
354 Bloomfield Ave. Bloomfield, N.J.

HEALTH CARE
\$55 FOR CHRISTMAS.
Need some extra cash for
* PRESENTS
* BILLS
* VACATION
OR JUST FOR YOU
Set your own hours, work as
much or as little as you like.
If you are or you know cer-
tified home health aides,
homemakers, companions
for choice locations in the
Suburban Essex County,
please contact us immediately.
We can assign almost im-
mediately. Live-in care is
available. I desired.
DON'T HESITATE. MYWATK
CALL NOW

HOLMES
SECURITY CORP.
354 Bloomfield Ave. Bloomfield, N.J.

HEALTH CARE
\$55 FOR CHRISTMAS.
Need some extra cash for
* PRESENTS
* BILLS
* VACATION
OR JUST FOR YOU
Set your own hours, work as
much or as little as you like.
If you are or you know cer-
tified home health aides,
homemakers, companions
for choice locations in the
Suburban Essex County,
please contact us immediately.
We can assign almost im-
mediately. Live-in care is
available. I desired.
DON'T HESITATE. MYWATK
CALL NOW

HOLMES
SECURITY CORP.
354 Bloomfield Ave. Bloomfield, N.J.

HEALTH CARE
\$55 FOR CHRISTMAS.
Need some extra cash for
* PRESENTS
* BILLS
* VACATION
OR JUST FOR YOU
Set your own hours, work as
much or as little as you like.
If you are or you know cer-
tified home health aides,
homemakers, companions
for choice locations in the
Suburban Essex County,
please contact us immediately.
We can assign almost im-
mediately. Live-in care is
available. I desired.
DON'T HESITATE. MYWATK
CALL NOW

HOLMES
SECURITY CORP.
354 Bloomfield Ave. Bloomfield, N.J.

HEALTH CARE
\$55 FOR CHRISTMAS.
Need some extra cash for
* PRESENTS
* BILLS
* VACATION
OR JUST FOR YOU
Set your own hours, work as
much or as little as you like.
If you are or you know cer-
tified home health aides,
homemakers, companions
for choice locations in the
Suburban Essex County,
please contact us immediately.
We can assign almost im-
mediately. Live-in care is
available. I desired.
DON'T HESITATE. MYWATK
CALL NOW

HOLMES
SECURITY CORP.
354 Bloomfield Ave. Bloomfield, N.J.

HEALTH CARE
\$55 FOR CHRISTMAS.
Need some extra cash for
* PRESENTS
* BILLS
* VACATION
OR JUST FOR YOU
Set your own hours, work as
much or as little as you like.
If you are or you know cer-
tified home health aides,
homemakers, companions
for choice locations in the
Suburban Essex County,
please contact us immediately.
We can assign almost im-
mediately. Live-in care is
available. I desired.
DON'T HESITATE. MYWATK
CALL NOW

HOLMES
SECURITY CORP.
354 Bloomfield Ave. Bloomfield, N.J.

HEALTH CARE
\$55 FOR CHRISTMAS.
Need some extra cash for
* PRESENTS
* BILLS
* VACATION
OR JUST FOR YOU
Set your own hours, work as
much or as little as you like.
If you are or you know cer-
tified home health aides,
homemakers, companions
for choice locations in the
Suburban Essex County,
please contact us immediately.
We can assign almost im-
mediately. Live-in care is
available. I desired.
DON'T HESITATE. MYWATK
CALL NOW

HOLMES
SECURITY CORP.
354 Bloomfield Ave. Bloomfield, N.J.

HEALTH CARE
\$55 FOR CHRISTMAS.
Need some extra cash for
* PRESENTS
* BILLS
* VACATION
OR JUST FOR YOU
Set your own hours, work as
much or as little as you like.
If you are or you know cer-
tified home health aides,
homemakers, companions
for choice locations in the
Suburban Essex County,
please contact us immediately.
We can assign almost im-
mediately. Live-in care is
available. I desired.
DON'T HESITATE. MYWATK
CALL NOW

HOLMES
SECURITY CORP.
354 Bloomfield Ave. Bloomfield, N.J.

HEALTH CARE
\$55 FOR CHRISTMAS.
Need some extra cash for
* PRESENTS
* BILLS
* VACATION
OR JUST FOR YOU
Set your own hours, work as
much or as little as you like.
If you are or you know cer-
tified home health aides,
homemakers, companions
for choice locations in the
Suburban Essex County,
please contact us immediately.
We can assign almost im-
mediately. Live-in care is
available. I desired.
DON'T HESITATE. MYWATK
CALL NOW

HOLMES
SECURITY CORP.
354 Bloomfield Ave. Bloomfield, N.J.

HEALTH CARE
\$55 FOR CHRISTMAS.
Need some extra cash for
* PRESENTS
* BILLS
* VACATION
OR JUST FOR YOU
Set your own hours, work as
much or as little as you like.
If you are or you know cer-
tified home health aides,
homemakers, companions
for choice locations in the
Suburban Essex County,
please contact us immediately.
We can assign almost im-
mediately. Live-in care is
available. I desired.
DON'T HESITATE. MYWATK
CALL NOW

HOLMES
SECURITY CORP.
354 Bloomfield Ave. Bloomfield, N.J.

HEALTH CARE
\$55 FOR CHRISTMAS.
Need some extra cash for
* PRESENTS
* BILLS
* VACATION
OR JUST FOR YOU
Set your own hours, work as
much or as little as you like.
If you are or you know cer-
tified home health aides,
homemakers, companions
for choice locations in the
Suburban Essex County,
please contact us immediately.
We can assign almost im-
mediately. Live-in care is
available. I desired.
DON'T HESITATE. MYWATK
CALL NOW

HOLMES
SECURITY CORP.
354 Bloomfield Ave. Bloomfield, N.J.

HEALTH CARE
\$55 FOR CHRISTMAS.
Need some extra cash for
* PRESENTS
* BILLS
* VACATION
OR JUST FOR YOU
Set your own hours, work as
much or as little as you like.
If you are or you know cer-
tified home health aides,
homemakers, companions
for choice locations in the
Suburban Essex County,
please contact us immediately.
We can assign almost im-
mediately. Live-in care is
available. I desired.
DON'T HESITATE. MYWATK
CALL NOW

HOLMES
SECURITY CORP.
354 Bloomfield Ave. Bloomfield, N.J.

HEALTH CARE
\$55 FOR CHRISTMAS.
Need some extra cash for
* PRESENTS
* BILLS
* VACATION
OR JUST FOR YOU
Set your own hours, work as
much or as little as you like.
If you are or you know cer-
tified home health aides,
homemakers, companions
for choice locations in the
Suburban Essex County,
please contact us immediately.
We can assign almost im-
mediately. Live-in care is
available. I desired.
DON'T HESITATE. MYWATK
CALL NOW

HOLMES
SECURITY CORP.
354 Bloomfield Ave. Bloomfield, N.J.

HEALTH CARE
\$55 FOR CHRISTMAS.
Need some extra cash for
* PRESENTS
* BILLS
* VACATION
OR JUST FOR YOU
Set your own hours, work as
much or as little as you like.
If you are or you know cer-
tified home health aides,
homemakers, companions
for choice locations in the
Suburban Essex County,
please contact us immediately.
We can assign almost im-
mediately. Live-in care is
available. I desired.
DON'T HESITATE. MYWATK
CALL NOW

HOLMES
SECURITY CORP.
354 Bloomfield Ave. Bloomfield, N.J.

HEALTH CARE
\$55 FOR CHRISTMAS.
Need some extra cash for
* PRESENTS
* BILLS
* VACATION
OR JUST FOR YOU
Set your own hours, work as
much or as little as you like.
If you are or you know cer-
tified home health aides,
homemakers, companions
for choice locations in the
Suburban Essex County,
please contact us immediately.
We can assign almost im-
mediately. Live-in care is
available. I desired.
DON'T HESITATE. MYWATK
CALL NOW

HOLMES
SECURITY CORP.
354 Bloomfield Ave. Bloomfield, N.J.

HEALTH CARE
\$55 FOR CHRISTMAS.
Need some extra cash for
* PRESENTS
* BILLS
* VACATION
OR JUST FOR YOU
Set your own hours, work as
much or as little as you like.
If you are or you know cer-
tified home health aides,
homemakers, companions
for choice locations in the
Suburban Essex County,
please contact us immediately.
We can assign almost im-
mediately. Live-in care is
available. I desired.
DON'T HESITATE. MYWATK
CALL NOW

HOLMES
SECURITY CORP.
354 Bloomfield Ave. Bloomfield, N.J.

HEALTH CARE
\$55 FOR CHRISTMAS.
Need some extra cash for
* PRESENTS
* BILLS
* VACATION
OR JUST FOR YOU
Set your own hours, work as
much or as little as you like.
If you are or you know cer-
tified home health aides,
homemakers, companions
for choice locations in the
Suburban Essex County,
please contact us immediately.
We can assign almost im-
mediately. Live-in care is
available. I desired.
DON'T HESITATE. MYWATK
CALL NOW

HOLMES
SECURITY CORP.
354 Bloomfield Ave. Bloomfield, N.J.

HEALTH CARE
\$55 FOR CHRISTMAS.
Need some extra cash for
* PRESENTS
* BILLS
* VACATION
OR JUST FOR YOU
Set your own hours, work as
much or as little as you like.
If you are or you know cer-
tified home health aides,
homemakers, companions
for choice locations in the
Suburban Essex County,
please contact us immediately.
We can assign almost im-
mediately. Live-in care is
available. I desired.
DON'T HESITATE. MYWATK
CALL NOW

HOLMES
SECURITY CORP.
354 Bloomfield Ave. Bloomfield, N.J.

HEALTH CARE
\$55 FOR CHRISTMAS.
Need some extra cash for
* PRESENTS
* BILLS
* VACATION
OR JUST FOR YOU
Set your own hours, work as
much or as little as you like.
If you are or you know cer-
tified home health aides,
homemakers, companions
for choice locations in the
Suburban Essex County,
please contact us immediately.
We can assign almost im-
mediately. Live-in care is
available. I desired.
DON'T HESITATE. MYWATK
CALL NOW

HOLMES
SECURITY CORP.
354 Bloomfield Ave. Bloomfield, N.J.

HEALTH CARE
\$55 FOR CHRISTMAS.
Need some extra cash for
* PRESENTS
* BILLS
* VACATION
OR JUST FOR YOU
Set your own hours, work as
much or as little as you like.
If you are or you know cer-
tified home health aides,
homemakers, companions
for choice locations in the
Suburban Essex County,
please contact us immediately.
We can assign almost im-
mediately. Live-in care is
available. I desired.
DON'T HESITATE. MYWATK
CALL NOW

HOLMES
SECURITY CORP.
354 Bloomfield Ave. Bloomfield, N.J.

HEALTH CARE
\$55 FOR CHRISTMAS.
Need some extra cash for
* PRESENTS
* BILLS
* VACATION
OR JUST FOR YOU
Set your own hours, work as
much or as little as you like.
If you are or you know cer-
tified home health aides,
homemakers, companions
for choice locations in the
Suburban Essex County,
please contact us immediately.
We can assign almost im-
mediately. Live-in care is
available. I desired.
DON'T HESITATE. MYWATK
CALL NOW

HOLMES
SECURITY CORP.
354 Bloomfield Ave. Bloomfield, N.J.

HEALTH CARE
\$55 FOR CHRISTMAS.
Need some extra cash for
* PRESENTS
* BILLS
* VACATION
OR JUST FOR YOU
Set your own hours, work as
much or as little as you like.
If you are or you know cer-
tified home health aides,
homemakers, companions
for choice locations in the
Suburban Essex County,
please contact us immediately.
We can assign almost im-
mediately. Live-in care is
available. I desired.
DON'T HESITATE. MYWATK
CALL NOW

HOLMES
SECURITY CORP.
354 Bloomfield Ave. Bloomfield, N.J.

HEALTH CARE
\$55 FOR CHRISTMAS.
Need some extra cash for
* PRESENTS
* BILLS
* VACATION
OR JUST FOR YOU
Set your own hours, work as
much or as little as you like.
If you are or you know cer-
tified home health aides,
homemakers, companions
for choice locations in the
Suburban Essex County,
please contact us immediately.
We can assign almost im-
mediately. Live-in care is
available. I desired.
DON'T HESITATE. MYWATK
CALL NOW

HOLMES
SECURITY CORP.
354 Bloomfield Ave. Bloomfield, N.J.

HEALTH CARE
\$55 FOR CHRISTMAS.
Need some extra cash for
* PRESENTS
* BILLS
* VACATION
OR JUST FOR YOU
Set your own hours, work as
much or as little as you like.
If you are or you know cer-
tified home health aides,
homemakers, companions
for choice locations in the
Suburban Essex County,
please contact us immediately.
We can assign almost im-
mediately. Live-in care is
available. I desired.
DON'T HESITATE. MYWATK
CALL NOW

HOLMES
SECURITY CORP.
354 Bloomfield Ave. Bloomfield, N.J.

HEALTH CARE
\$55 FOR CHRISTMAS.
Need some extra cash for
* PRESENTS
* BILLS
* VACATION
OR JUST FOR YOU
Set your own hours, work as
much or as little as you like.
If you are or you know cer-
tified home health aides,
homemakers, companions
for choice locations in the
Suburban Essex County,
please contact us immediately.
We can assign almost im-
mediately. Live-in care is
available. I desired.
DON'T HESITATE. MYWATK
CALL NOW

HOLMES
SECURITY CORP.
354 Bloomfield Ave. Bloomfield, N.J.

HEALTH CARE
\$55 FOR CHRISTMAS.
Need some extra cash for
* PRESENTS
* BILLS
* VACATION
OR JUST FOR YOU
Set your own hours, work as
much or as little as you like.
If you are or you know cer-
tified home health aides,
homemakers, companions
for choice locations in the
Suburban Essex County,
please contact us immediately.
We can assign almost im-
mediately. Live-in care is
available. I desired.
DON'T HESITATE. MYWATK
CALL NOW

HOLMES
SECURITY CORP.
354 Bloomfield Ave. Bloomfield, N.J.

HEALTH CARE
\$55 FOR CHRISTMAS.
Need some extra cash for
* PRESENTS
* BILLS
* VACATION
OR JUST FOR YOU
Set your own hours, work as
much or as little as you like.
If you are or you know cer-
tified home health aides,
homemakers, companions
for choice locations in the
Suburban Essex County,
please contact us immediately.
We can assign almost im-
mediately. Live-in care is
available. I desired.
DON'T HESITATE. MYWATK
CALL NOW

HOLMES
SECURITY CORP.
354 Bloomfield Ave. Bloomfield, N.J.

HEALTH CARE
\$55 FOR CHRISTMAS.
Need some extra cash for
* PRESENTS
* BILLS
* VACATION
OR JUST FOR YOU
Set your own hours, work as
much or as little as you like.
If you are or you know cer-
tified home health aides,
homemakers, companions
for choice locations in the
Suburban Essex County,
please contact us immediately.
We can assign almost im-
mediately. Live-in care is
available. I desired.
DON'T HESITATE. MYWATK
CALL NOW

HOLMES
SECURITY CORP.
354 Bloomfield Ave. Bloomfield, N.J.

HEALTH CARE
\$55 FOR CHRISTMAS.
Need some extra cash for
* PRESENTS
* BILLS
* VACATION
OR JUST FOR YOU
Set your own hours, work as
much or as little as you like.
If you are or you know cer-
tified home health aides,
homemakers, companions
for choice locations in the
Suburban Essex County,
please contact us immediately.
We can assign almost im-
mediately. Live-in care is
available. I desired.
DON'T HESITATE. MYWATK
CALL NOW

HOLMES
SECURITY CORP.
354 Bloomfield Ave. Bloomfield, N.J.

HEALTH CARE
\$55 FOR CHRISTMAS.
Need some extra cash for
* PRESENTS
* BILLS
* VACATION
OR JUST FOR YOU
Set your own hours, work as
much or as little as you like.
If you are or you know cer-
tified home health aides,
homemakers, companions
for choice locations in the
Suburban Essex County,
please contact us immediately.
We can assign almost im-
mediately. Live-in care is
available. I desired.
DON'T HESITATE. MYWATK
CALL NOW

HOLMES
SECURITY CORP.
354 Bloomfield Ave. Bloomfield, N.J.

REAL ESTATE

FOR RENT

ATTENTION LANDLORDS!!

APARTMENTS WANTED

WE SCREEN ALL PROSPECTIVE TENANTS. NO

FEE TO LANDLORD

COSTANTINE REALTY

289 FRANKLIN AVE. NUTLEY, N.J.

REALTOR

667-7070

1226

APARTMENTS WANTED

ATTENTION LANDLORDS!!

WE HAVE MANY QUALIFIED TENANTS THAT ARE

SCREENED AND WAITING FOR APARTMENTS OR

HOUSES. YOU CAN CHOOSE THAT SPECIAL TENANT AT

NO COST TO YOU. FOR INFORMATION CALL TONY

GRANDE.

REAL ESTATE REAL ESTATE REAL ESTATE REAL ESTATE REAL ESTATE REAL ESTATE REAL ESTATE REAL ESTATE REAL ESTATE

180 Centre St.
Nutley, N.J. 07110
667-3440

GEORGE E. MAC MUNN C O.

REALTORS

100 Woodport Road
Sparta, N.J. 07871
729-8727



EXTRA! EXTRA! READ ALL ABOUT IT - NEW LISTING IN NUTLEY - Executive colonial featuring 18x16 family room w/cath. ceiling & brick flpl, mod kitchen with separate breakfast room and sliders to deck overlooking professionally landscaped yard, 3 lg. bedrooms, 1 1/2 baths, lovely rec. room and central air throughout.



SPACIOUS RANCH IN NUTLEY with 7 rooms on one floor + beautiful fam. room in basement, fireplace, central air & 2 baths. ASKING \$139,900. YOUR OFFER MAY TAKE IT!!

Your Home
Could Be
Featured
Here.

List With
Mac Munn

Look for this Emblem



JUST LISTED - ABOVE UNION AVE. IN BELLEVILLE near Forest St., School. This 3 bedroom home has been completely rebuilt & modernized in the past 3 years - 2 beautiful baths, ultra mod kitchen formal din. rm w/sliders to deck - finished fam. rm - extra lg. garage + much more. CALL NOW!!!



THE ULTIMATE IN PRIVACY IN SUSSEX COUNTY just minutes to Rt. 80. Outstanding home on 4+ acres, huge master bedroom with its own fireplace and master bath, 2 other bedrooms & bath, fireplace in liv. rm, & sliders to patio and inground pool. IT HAS EVERYTHING. ASKING \$145,900.

Township Awarded \$2 Million in Grants

(Continued from page 1)

money is available and what became of funds earmarked for improvement but not put to use. "Many of the merchants aid for their own renovations," he said after the session. "I just want to see where that county money was spent if it was granted to anyone."

Another resident, Helen Cordasco, asked if grant money could be obtained to install an elevator in the Town Hall building.

Cimino said the funds cannot be used for improvements on public buildings, but under the Barner Free Act, such a project could be eligible if intended to make access for the handicapped possible.

Henry Chazewski of Joralemon Street asked Cimino if the county regularly checks to see if the municipalities participating in the grant program use the money awarded as they say they will.

"There can be fraud if a town does not use the money for a stated purpose," the citizen said. Cimino assured Chazewski of the numerous checks the department places upon the awards. "We have on-site inspection to be sure the right project is being worked on and completed," he said.

Cimino noted that if the county discovers any irregularities in a grant project, payment of the funds will be held up.

Still displeased, Chazewski noted that such an action would not relieve the taxpayers since the municipality would then have to pick up the tab for any work done but not funded by the expected grant.

In a related matter, commissioners voted later that evening to pay municipal engineer Neil Scialano for improvements made on William Street and for work on Cortlandt Street park project. However, resolutions authorizing payment for Brighton Avenue

improvements, Friendly House improvements, and the William Street park were withdrawn.

Mayor Michael Marotti said, "Before I vote on paying someone, I want to see some work done."

Marotti said he would vote to pay Scialano for projects that show evidence of work but not for the others.

The other commissioners agreed. Public Safety Director Ralph DiRuggiero added, "I'd like to see Neil here before I vote on any of these in question."

Men's Over 30 League Begins

The opening night in the Belleville Recreation Department's 1984-85 Over 30 Men's Basketball League took place Wednesday, Nov. 28 with four games.

In a see-saw battle, Vito Sylvestro's Garden Market nipped Radio Shack, 29-28. Jack Rush scored nine and Alex Herrera added seven for the winners. Radio Shack was paced by Bill Biernie with 11 points and Frank Carraccia with seven.

Sparked by Hank Dillon's 17 points and Ed Edwards' 14, Newark Beverages defeated Sally's Auto Parts, 50-39. The losers were led by Dan Dunn and Mike Pedalino who scored 15 and 10 points respectively.

The Italian Fiorente Society, ignited by Jim Corino's 16 and Butch Servidio's 14, turned back the Belleville Knights, 51-45. Ted Raine's 22 points was wasted in the loss.

Red Higgins pumped in 25 points and teammate Mike Liola scored 11 to help Tether sauce by Megaro Memorial Home in overtime, 51-48. Leading Megaro was Hector Flores with 14 and Ken Atkinson with 10 points.

SHERIFF'S SALE
SUPERIOR (CHANCERY) C-165
SUPERIOR COURT OF NEW JERSEY
CHANCERY DIVISION, ESSEX COUNTY
DOCKET NO. F-3386-84 FLEET MORTGAGE CORPORATION, PLAINTIFF vs. HARVEY I. RASBERY et al., DEFENDANTS. Execution For Sale of Mortgaged Premises.

By virtue of the above stated writ of Execution, to me directed, I shall expose for sale by Public Auction, in SHERIFF'S OFFICE, Essex County Court Building in Newark, on Tuesday, the 11th day of December next, at one thirty P.M. (Prevaling Time).

The bidders are required to comply with the requirements of P.L. 1975, C. 127, N.J. Law Against Discrimination, and Ch. 33, Laws of 1977.

No bid will be considered, regardless of the postmark, unless it is in the hands of the Secretary/School Board Business Administrator prior to the time set for the opening of the bids.

BY ORDER OF THE BOARD OF EDUCATION OF THE TOWNSHIP OF BELLEVILLE, COUNTY OF ESSEX, NEW JERSEY
Edward J. Appleton, Acting Board Secretary
The Belleville Times
Dec. 6, 1984
Fee: \$23.03

No. B84-454

Religious Viewpoint

Star Struck

If the sun was the size of a basketball, earth would be a pinhead over 25 yards away. The most distant planet in our solar system would be smaller still and out of sight, three quarters of a mile down the road. Locate all this in an area the size of New York City and the rest of the North American continent would be empty space.

Does this boggle your mind? It certainly does mine! And remember our solar system is just one atom in the great body of the universe. We say with the Psalmist, "The heavens declare the glory of God; and the firmament showeth his handiwork" (Psalm 19:1).

We have the advantage of modern astronomy to make our appreciation of the glory of God even greater. Let's go outside on a clear summer evening and look at the sky together. We'll get away from the blinding city lights and enjoy the view of the heavens together.

Dominating our view is the moon, bright and clear. It is quite close, only 240,000 miles away. But the moon is just the beginning. You'll also be able to see the planet Venus, which we sometimes call the Evening Star. This little dot in the sky, is actually 40 times as big and 100 times farther away. It's about the size of earth, and, next to the moon, it's our closest neighbor.

If our whole solar system was located in New York City, the nearest star would be closer to Hawaii with nothing but space in between. Yet as we look at the sky tonight every star we can see is much farther away than that. All of these stars, and 100 billion more like them, are parts of our Milky Way galaxy.

If God began to make our galaxy at the time Jesus Christ was born, and if He made one new star every second over the nearly 2,000 years since that date, he would be just a little more than half-finished.

And who created all this? "In the beginning God created the heaven and the Earth. And this same God provided a Saviour for sinners, for Christ Jesus came into the world to save sinners." (1st Timothy 1:15)

Use of Computers Studied By Board of Education

(Continued from page 1)

In a tighter con, the computer specialist invited the board and parents present at the session to stars for a look at the system in operation.

Parents called out names of their sons and daughters watching as Buoni called up each name on the terminal.

Grades, attendance records, and personal data flashed on the screen as parents examined their children's statistics for accuracy.

EVERYBODY IN THE POOL

THE POOLED INCOME FUND OF THE AMERICAN CANCER SOCIETY FOR INFORMATION CALL THE AMERICAN CANCER SOCIETY



No. B84-453

there's something new under the sun.



You'll be glad you over our new listing. It's the new and best... happening under the sun.

New listing!! 2 family, 17 years young. Separate utilities. Gas heat. 5 over 5. All nice size rooms. Only \$140,000. Eves. call Pam 743-4585.

Century 21 WAYNE K. THOMAS REALTORS

277 Broad Street Bloomfield, New Jersey (201) 429-7400

Each office independently owned and operated MEMBER OF BLOOMFIELD GLEN RIDGE, NUTLEY, BELLEVILLE BOARD OF REALTORS

GOLD MARKET ANALYSIS CERTIFICATE

Bearer is entitled to a Market Analysis of his/her residential property by a Century 21 agent. Return this Certificate or call for an appointment.

Century 21 HOMES R US 544 Washington Ave. Belleville, N.J. 751-8800

Put Number 1 to work for you.

ADVERTISEMENT FOR BIDS

SEALED proposals will be received by the Board of Education of the Township of Belleville, County of Essex, N.J., at its Administrative Office, County, at its Administrative Office, County, on December 17, 1984, for the following:

10:00 am - prevailing time. Updating Computer Assisted Instruction System.

The Board of Education reserves the right to reject any and all bids and/or to accept the bid that in its judgment will be best for the School District of Belleville, and to waive any informalities. If only one bid is received, the Board reserves the right to reject said bid without opening the same.

A certified check must be submitted with the bid to the order of the "Board of Education" in the amount of \$2000.00 for product lab testing or chemical analysis to prove substitute equal to specified product. If the product of the low bidder shows test results of the equivalent to the specified

product, the \$2000.00 check of the bidder will be returned. If said test results are not acceptable, the check of the next low bidder will be applied to the cost of testing his product, etc. No bid will be accepted for the Updating of the Computer Assisted Instruction System unless accompanied by a certified check made payable to the Belleville Board of Education in the amount of 10% of the total bid.

The bidders are required to comply with the requirements of P.L. 1975, C. 127, N.J. Law Against Discrimination, and Ch. 33, Laws of 1977.

No bid will be considered, regardless of the postmark, unless it is in the hands of the Secretary/School Board Business Administrator prior to the time set for the opening of the bids.

BY ORDER OF THE BOARD OF EDUCATION OF THE TOWNSHIP OF BELLEVILLE, COUNTY OF ESSEX, NEW JERSEY
Edward J. Appleton, Acting Board Secretary
The Belleville Times
Dec. 6, 1984
Fee: \$23.03

No. B84-507



ShopRite

For The HOLIDAYS



Gift Ideas

WHY PAY MORE™

Butter Cup Kids Dolls

BEST BUY!

9.99 each

STRAWBERRIES & CREAM Covered Dutch Oven 5 1/2 qt. **15.99**

MINI SLIM AM/FM/CASSETTE TWO WAY SPEAKER, MODEL #4825 **59.99**

ELECTRIC, STAINLESS STEEL 4-12 CUP Farberware Coffee Maker, MSB **39.99**

Log Gift Wrap 30 in. **1.99**

Star Bow Bag 25 ct. **.59**

Christmas Gift Boxes 1.29

WHY PAY MORE™

Rainbow Pets 8 in. **3.99**

15-FT. GOLD OR SILVER Garland or Tinsel ea. **1.69**

*Available in limited quantities in stores that normally carry appliances.

Health & Beauty Aids

WHY PAY MORE™

Aqua-fresh Toothpaste 8.2-oz. tube **1.49**

WHY PAY MORE™

Maalox Liquid 12-oz. btl. **2.29**

CHEERY, MENTHOL, BLUE OR HONEY Halls Cough Drops 3-pk. or bag of 30 **.89**

The Dairy Place

SWEET 'N' LOW (6-OZ.) OR New Country Yogurt 8-oz. conts. **4.100**

TROPICANA PREMIUM PACK Orange Juice 1/2-gal. cart. **1.89**

ShopRite American Singles 12-oz. pkg. **1.19**

EXTRA SHARP ShopRite Cheddar 10-oz. pkg. **1.79**

The Deli Place

WHY PAY MORE™

John Morrell Canned Ham 5-lb. can **7.99**

REGULAR OR THICK SLICED Oscar Mayer Bacon 1-lb. pkg. **1.99**

MSB OR ShopRite Chicken Franks 1-lb. pkg. **.89**

THORN APPLE VALLEY Sliced Ham 1-lb. pkg. **2.99**

The Frozen Food Place

WHY PAY MORE™

Tropicana Orange Juice 12-oz. can **1.19**

MAC, & CHEESE OR BEEF, TURKEY OR CHICKEN Banquet Pot Pies 3 8-oz. pkgs. **1.00**

CELESTANO, "MINI ROUND" Cheese Ravioli 8-oz. pkg. **.89**

9 SLICE ShopRite Cheese Pizza 24-oz. pkg. **1.99**

MINUTE MAID Bright & Early 12-oz. can **.49**

GRADE A CUT CORN, PEAS, PEAS & CARROTS OR MIXED ShopRite Vegetables 40-oz. bag **1.59**

ALL VARIETIES Lender's Bagels 10-oz. pkg. **.59**

ASSORTED FLAVORS, ICE CREAM Flavor King 1/2-gal. cart. **1.39**

The Grocery Place

MOTT'S REG. OR NATURAL Apple Juice 1/2-gal. btl. **.99**

ASSORTED OR WHITE ShopRite Napkins 250-ct. bag **.89**

ShopRite "BLUE LABEL" FRESH PACK Tomato Juice 1-qt. 9 oz. can **.59**

OCEAN SPRAY PINEAPPLE OR PINK OR WHITE Grapefruit Juice 1-qt. 1 pt. btl. **.99**

COFFEE

Chock Full O' Nuts 1-lb. can **1.99**

REG. OR OLD FASHION, SPEAS FARM Apple Cider 1-gal. btl. **2.99**

ALL VARIETIES, 3-PACK Hi-C Fruit Drinks 25.35-oz. 1-w. pkg. **.69**

REG. OR OLD FASHION, SPEAS FARM Hot Cocoa Mix 12-oz. box **.99**

ShopRite Toaster Tarts 11-oz. box **.69**

GOLDEN OR SEEDLESS ShopRite Raisins 15-oz. box **.89**

REG. OR NO SALT, ShopRite Barrel Peanuts 1-lb. 14 oz. jar **2.99**

MILK, SEMI-SWEET, LITTLE BITS OR MAXI Nestle Morsels 11.5-oz. pkg. **1.79**

The MEATing® Place

ANY SIZE PKG., NOT LESS THAN 80% Lean Ground Beef **1.47** lb.

NOT LESS THAN 80% Lean Ground Beef Patties ANY SIZE PKG. lb. **1.67**

RIB PORTION Boneless Pork Loin Roast lb. **1.97**

THIN CUT FROM LEG Veal Scallopini lb. **6.99**

FOR STEW

Boneless Veal 1-lb. **2.79**

ShopRite SHOULDER (WATER ADDED) Smoked Pork Butts 1-lb. **1.99**

THORN APPLE VALLEY, THICK CUT Corned Beef Brisket 1-lb. **1.69**

Thorn Apple Valley

FAMILY PACK BEEF Smoked Sausage 1-lb. **1.99**

APPROX. 1-LB. BEEF Polska Kielbasa 1-lb. **2.09**

The Bakery Place

ShopRite 12-OZ. PKG. REG. 25¢ OFF PRICE Hard Rolls 1-pkg. **.37**

SWIRL, UNSEEDLED, SEEDLED OR PUMPKIN SEED Manischewitz Rye Bread 16-oz. loaf **.79**

NO PRES. ADDED, REG. OR SANDWICH ShopRite White Bread 20-oz. lvs. **.99**

REG. OR KRINKLE, ShopRite Potato Chips 11-oz. bag **1.09**

WHY PAY MORE™

Lipton Tea Bags 100-ct. box **1.99**

LIQUID Clorox Bleach 1-gal. btl. **.89**

ALL VAR., EX. ANGEL FOOD, DUNCAN HINES Cake Mixes 1-lb. 2 1/2 oz. box **.79**

REGULAR, UNBLEACHED OR BREAD Pillsbury Flour 5-lb. bag **.69**

WHY PAY MORE™

Wesson Corn Oil 1-qt. 1 pt. btl. **1.99**

WHY PAY MORE™

Farm Flavor Yams 2-lb. 8 oz. can **.69**

WHY PAY MORE™

Prince Lasagna 1-lb. pkg. **.59**

PLUM, ROUND, CRUSHED OR PUREE Red Pack Tomatoes 1-lb. 12 oz. can **.79**

1-PLY ShopRite Bathroom Tissue 3 1000-ct. rolls **1.00**

PLUS DEP. WHERE REG. 12-OZ. CANS REG. DIET OR FREE C & C Cola 6-pack 12-oz. 1-w. **.99**

PLUS DEP. WHERE REG. C & C Seltzer 3 2-ltr. btlis. **1.00**

PAPER Viva Towels 90-ct. roll **.69**

RIB CUT PORK ROAST OR

Center Cut Pork Chops lb. **1.67**

CENTER CUT Boneless Pork Chops lb. **2.67**

MEATY, RIB PORTION Pork Loin For Barbecue lb. **1.37**

Gift Certificate

\$15

\$25

GIFT CERTIFICATE

Here's a gift that's sure to be appreciated by everyone on your list. A ShopRite Gift Certificate—available in \$5, \$10, \$15, \$25 & \$50 units. They're good at any ShopRite supermarket and can be used for any food or non-food item.

FRUIT BASKETS

ShopRite introduces... Holiday Fruit Baskets. Luscious fruits and tasty nuts in beautifully arranged bowls and baskets. A perfect gift for any occasion!

The Produce Place

SEEDLESS 88 SIZE Large Sunkist Navel Oranges **6.99** for

LARGE RED RIPE Slicing Tomatoes lb. **.39**

EXTRA LARGE 27 SIZE FLA. WHITE Seedless Grapefruit 4 for **.99**

BUNCHES OF JUICY FLAVOR Red Emperor Grapes lb. **.79**

U.S. #1 GRADE Yellow Onions 3-lb. bag **.69**

FRESH CALIFORNIA Broccoli Rabe lb. **.79**

CRISP CALIFORNIA Pascal Celery large stalk **.59**

FRESH & JUICY 8 SIZE Large Pineapples each **1.69**

LARGE FRESH Green Peppers lb. **.69**

ROYAL PURPLE Fresh Eggplant lb. **.49**

The Appy Place

STORE SLICED Chicken Breast lb. **2.49**

OPEN 7 DAYS

Mon-Th 8am-9pm

Fri-Sat 8am-10pm

Sat. 8am-6pm

Sun. 9am-2pm

Slow-K Tablets 100 - **7.99**

(Atenolol) R Tendrin® 5 mg. Tablets 100 - **'33.99**

(Propanolol HC1) Inderal® 20 mg. Tablets 100 - **'10.99**

LoPressor 50 mg. Tablets 100 - **'16.99**

© Copyright 1983 Wakefern Food Corp.

See The High Quality Our Low Prices Can Buy!

In order to assure a sufficient supply of sales items for all our customers, we must reserve the right to limit the purchase to units of 4 of any sales items, except where otherwise noted. Not responsible for typographical errors. Prices effective Sun., Dec. 2 thru Sat., Dec. 8, 1984. None sold to other retailers or wholesalers. Artwork does not necessarily represent item on sale, it is for display purposes only. Copyright WAKEFERN FOOD CORPORATION 1984.